

bs-2663R**[Primary Antibody]****BioSS**
ANTIBODIES

www.bioss.com.cn

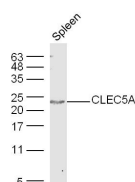
sales@bioss.com.cn

techsupport@bioss.com.cn

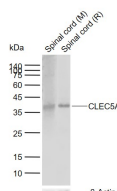
400-901-9800

CLEC5A Rabbit pAb**— DATASHEET —****Host:** Rabbit**Isotype:** IgG**Clonality:** Polyclonal**GeneID:** 23845**SWISS:** Q9R007**Target:** CLEC5A**Immunogen:** KLH conjugated synthetic peptide derived from mouse CLEC5A: 101-190/190. < Extracellular >**Purification:** affinity purified by Protein A**Concentration:** 1mg/ml**Storage:** 0.01M TBS (pH7.4) with 1% BSA, 0.02% Proclin300 and 50% Glycerol.

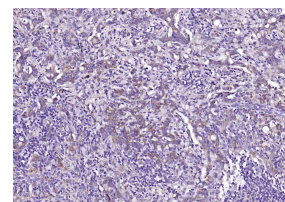
Shipped at 4°C. Store at -20°C for one year. Avoid repeated freeze/thaw cycles.

Background: This gene encodes a member of the C-type lectin/C-type lectin-like domain (CTL/CTLD) superfamily. Members of this family share a common protein fold and have diverse functions, such as cell adhesion, cell-cell signalling, glycoprotein turnover, and roles in inflammation and immune response. The encoded type II transmembrane protein interacts with dnax-activation protein 12 and may play a role in cell activation. Alternative splice variants have been described but their full-length sequence has not been determined. [provided by RefSeq].**Applications:** WB (1:500-2000)**IHC-P** (1:100-500)**IHC-F** (1:100-500)**IF** (1:100-500)**Reactivity:** Human, Mouse, Rat
(predicted: Rabbit, Pig,
Cow, Horse)**Predicted
MW.:** 22 kDa**Subcellular
Location:** Cell membrane**— VALIDATION IMAGES —**

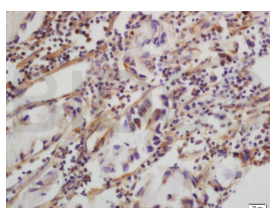
Sample: Spleen (Mouse) Lysate at 40 ug
 Primary: Anti-CLEC5A(bs-2663R) at 1/300 dilution
 Secondary: IRDye800CW Goat Anti-Rabbit IgG at 1/20000 dilution
 Predicted band size: 22 kD
 Observed band size: 22 kD



Sample: Lane 1: Mouse Spinal cord tissue lysates
 Lane 2: Rat Spinal cord tissue lysates
 Primary: Anti-CLEC5A (bs-2663R) at 1/1000 dilution
 Secondary: IRDye800CW Goat Anti-Rabbit IgG at 1/20000 dilution
 Predicted band size: 22 kDa
 Observed band size: 37 kDa



Paraformaldehyde-fixed, paraffin embedded (human gastric carcinoma); Antigen retrieval by boiling in sodium citrate buffer (pH6.0) for 15min; Block endogenous peroxidase by 3% hydrogen peroxide for 20 minutes; Blocking buffer (normal goat serum) at 37°C for 30min; Antibody incubation with (CLEC5A) Polyclonal Antibody, Unconjugated (bs-2663R) at 1:200 overnight at 4°C, followed by operating according to SP Kit(Rabbit) (sp-0023) instructions and DAB staining.



Tissue/cell: human colon carcinoma; 4%
 Paraformaldehyde-fixed and paraffin-
 embedded; Antigen retrieval: citrate buffer (0.01M, pH 6.0), Boiling bathing for 15min; Block
 endogenous peroxidase by 3% Hydrogen

Important Note: This product as supplied is intended for research use only, not for use in human, therapeutic or diagnostic applications.

peroxide for 30min; Blocking buffer (normal goat serum,C-0005) at 37°C for 20 min; Incubation: Anti-CLEC5A/MDL1 Polyclonal Antibody, Unconjugated(bs-2663R) 1:200, overnight at 4°C, followed by conjugation to the secondary antibody(SP-0023) and DAB(C-0010) staining

— SELECTED CITATIONS —

- **[IF=7.7]** Daoxi Qi. et al.Epigenetic upregulation of CLEC5A contributes to monocyte/macrophage dysfunction in coronary artery disease..International Journal of Biological Macromolecules.2025 Mar 25;308(Pt 2):142471. IF ;Mouse. 40147659
- **[IF=4.681]** Tong L et al. CLEC5A expressed on myeloid cells as a M2 biomarker relates to immunosuppression and decreased survival in patients with glioma. Cancer Gene Ther. 2019 Oct 8. IHC,IF,WB ;Human. 31591460
- **[IF=2]** Wang Xin. et al. REEP5 mediates the function of CLEC5A to alleviate myocardial infarction by inhibiting endoplasmic reticulum stress-induced apoptosis. BMC CARDIOVASC DISOR. 2024 Dec;24(1):1-13 WB ;Human. 39044150