

bs-0933R**[Primary Antibody]****Bioss**
ANTIBODIES

www.bioss.com.cn

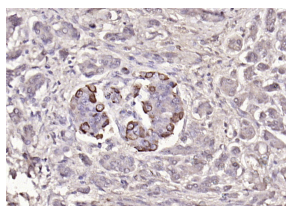
sales@bioss.com.cn

techsupport@bioss.com.cn

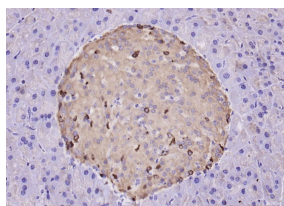
400-901-9800

GLP-1 Rabbit pAb**— DATASHEET —**

Host: Rabbit	Isotype: IgG	Applications: IHC-P (1:100-500)
Clonality: Polyclonal		IHC-F (1:100-500)
GeneID: 2641	SWISS: P01275	IF (1:100-500)
Target: GLP-1		Reactivity: Human, Mouse, Rat
Immunogen: KLH conjugated synthetic peptide derived from human GLP-1: 1-31/31.		
Purification: affinity purified by Protein A		Predicted MW.: 21 kDa
Concentration: 1mg/ml		Subcellular Location: Secreted
Storage: 0.01M TBS (pH7.4) with 1% BSA, 0.02% Proclin300 and 50% Glycerol. Shipped at 4°C. Store at -20°C for one year. Avoid repeated freeze/thaw cycles.		
Background: Glucagon plays a key role in glucose metabolism and homeostasis. Regulates blood glucose by increasing gluconeogenesis and decreasing glycolysis. A counterregulatory hormone of insulin, raises plasma glucose levels in response to insulin-induced hypoglycemia. Plays an important role in initiating and maintaining hyperglycemic conditions in diabetes.		

— VALIDATION IMAGES —

Paraformaldehyde-fixed, paraffin embedded (human pancreatic cancer); Antigen retrieval by boiling in sodium citrate buffer (pH6.0) for 15min; Block endogenous peroxidase by 3% hydrogen peroxide for 20 minutes; Blocking buffer (normal goat serum) at 37°C for 30min; Antibody incubation with (GLP-1) Polyclonal Antibody, Unconjugated (bs-0933R) at 1:200 overnight at 4°C, followed by operating according to SP Kit(Rabbit) (sp-0023) instructions and DAB staining.



Paraformaldehyde-fixed, paraffin embedded (rat pancreas); Antigen retrieval by boiling in sodium citrate buffer (pH6.0) for 15min; Block endogenous peroxidase by 3% hydrogen peroxide for 20 minutes; Blocking buffer (normal goat serum) at 37°C for 30min; Antibody incubation with (GLP-1) Polyclonal Antibody, Unconjugated (bs-0933R) at 1:200 overnight at 4°C, followed by operating according to SP Kit(Rabbit) (sp-0023) instructions and DAB staining.

— SELECTED CITATIONS —

- **[IF=4.5]** Pengfei Lv. et al. Intestinal Perfusion of Unacylated Ghrelin Alleviated Metabolic Associated Fatty Liver Disease in Rat via a Central Glucagon-Like Peptide-1 Pathway. AM J PHYSIOL-GASTR L. 2024 Apr;(Articles in Press): IHC,IF ;Rat. 38564323
- **[IF=1.918]** Haili Zhang. et al. Morphological changes in the digestive tract of the Chinese soft-shelled turtle (Pelodiscus sinensis) during embryonic development. J HISTOTECHNOL. 2022 Aug 01 IHC ;Chicken. 35912945