

KLRG2 Rabbit pAb

Catalog Number: bs-16787R

Target Protein: KLRG2

Concentration: 1mg/ml

Form: Liquid

Host: Rabbit

Clonality: Polyclonal

Isotype: IgG

Applications: WB (1:500-2000)

Reactivity: Human

Predicted MW: 43 kDa

Entrez Gene: 346689

Swiss Prot: A4D1S0

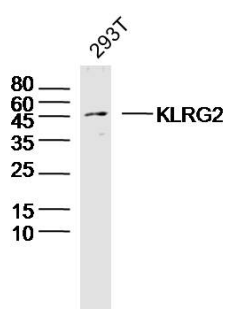
Source: KLH conjugated synthetic peptide derived from human KLRG2: 101-200/409.

Purification: affinity purified by Protein A

Storage: 0.01M TBS (pH7.4) with 1% BSA, 0.02% Proclin300 and 50% Glycerol.

Shipped at 4°C. Store at -20°C for one year. Avoid repeated freeze/thaw cycles.

VALIDATION IMAGES



Sample: 293T Cell (Human) Lysate at 40 ug Primary: Anti- KLRG2 (bs-16787R) at 1/300 dilution Secondary: IRDye800CW Goat Anti-Rabbit IgG at 1/20000 dilution Predicted band size: 43 kD Observed band size: 45 kD