

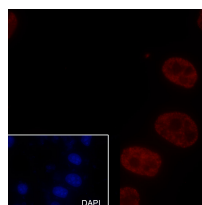
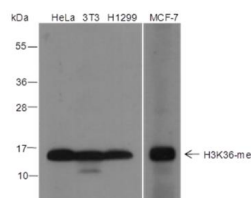
**bs-60109R****[ Primary Antibody ]****Mono-Methyl-Histone H3 (Lys36) Rabbit pAb****BioSS**  
**ANTIBODIES**

www.bioss.com.cn

sales@bioss.com.cn

techsupport@bioss.com.cn

400-901-9800

**— DATASHEET —****Host:** Rabbit**Isotype:** IgG**Clonality:** Polyclonal**Target:** Mono-Methyl-Histone H3 (Lys36)**Purification:** Antigen affinity purification**Concentration:** 1mg/ml**Storage:** 0.01M TBS (pH7.4) with 1% BSA, 0.02% Proclin300 and 50% Glycerol.  
Shipped at 4°C. Store at -20°C for one year. Avoid repeated freeze/thaw cycles.**Background:** Modulation of the chromatin structure plays an important role in the regulation of transcription in eukaryotes. The nucleosome, made up of four core histone proteins (H2A, H2B, H3 and H4), is the primary building block of chromatin. The N-terminal tail of core histones undergoes different posttranslational modifications including acetylation, phosphorylation and methylation. These modifications occur in response to cell signal stimuli and have a direct effect on gene expression. In most species, the histone H2B is primarily acetylated at lysines 5, 12, 15 and 20. Histone H3 is primarily acetylated at lysines 9, 14, 18 and 23. Acetylation at lysine 9 appears to have a dominant role in histone deposition and chromatin assembly in some organisms. Phosphorylation at Ser10 of histone H3 is tightly correlated with chromosome condensation during both mitosis and meiosis.**Applications:** **WB** (1:500-1:2000)  
**ICC/IF** (1:50-1:200)**Reactivity:** Human (predicted: Mouse, Rat)**Predicted MW.:** 17 kDa**Subcellular Location:** Nucleus**— VALIDATION IMAGES —**

Blocking buffer: 5% NFDM/TBST Primary ab dilution: 1:2000 Primary ab incubation condition: 2 hours at room temperature  
Secondary ab: Goat Anti-Rabbit IgG H&L (HRP)  
Lysate: HeLa, 3T3, H1299, MCF-7 Protein loading quantity: 20 µg Exposure time: 15 s Predicted MW: 15 kDa Observed MW: 15 kDa

Cell line: HeLa Fixative: 4% Paraformaldehyde Permeabilization: 0.1% TritonX-100 Primary ab dilution: 1:200 Primary incubation condition: 4°C overnight Secondary ab: Goat Anti-Rabbit IgG  
Nuclear counter stain: DAPI (Blue) Comment: Color red is the positive signal for bs-60109R