

bs-6191R**[Primary Antibody]****Bioss**
ANTIBODIES

www.bioss.com.cn

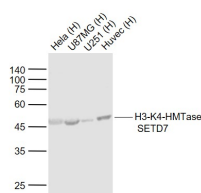
sales@bioss.com.cn

techsupport@bioss.com.cn

400-901-9800

H3-K4-HMTase SETD7 Rabbit pAb**— DATASHEET —**

Host: Rabbit Clonality: Polyclonal GeneID: 80854 Target: H3-K4-HMTase SETD7 Immunogen: KLH conjugated synthetic peptide derived from human SETD7: 271-366/366. Purification: affinity purified by Protein A Concentration: 1mg/ml Storage: 0.01M TBS (pH7.4) with 1% BSA, 0.02% Proclin300 and 50% Glycerol. Shipped at 4°C. Store at -20°C for one year. Avoid repeated freeze/thaw cycles. Background: Histone methyltransferase that specifically monomethylates 'Lys-4' of histone H3. H3 'Lys-4' methylation represents a specific tag for epigenetic transcriptional activation. Plays a central role in the transcriptional activation of genes such as collagenase or insulin. Recruited by IPF1/PDX-1 to the insulin promoter, leading to activate transcription. Has also methyltransferase activity toward non-histone proteins such as p53/TP53, TAF10, and possibly TAF7 by recognizing and binding the [KR]-[STA]-K in substrate proteins. Monomethylates 'Lys-189' of TAF10, leading to increase the affinity of TAF10 for RNA polymerase II. Monomethylates 'Lys-372' of p53/TP53, stabilizing p53/TP53 and increasing p53/TP53-mediated transcriptional activation. Also able to demethylated 'Lys-372' of p53/TP53 in vitro.	Isotype: IgG SWISS: Q8WTS6 Applications: WB (1:500-2000) Reactivity: Human (predicted: Mouse, Rat, Pig, Cow, Dog, Horse) Predicted MW.: 41 kDa Subcellular Location: Nucleus
--	---

— VALIDATION IMAGES —

Sample: Lane 1: HeLa (Human) Cell Lysate at 30 ug
Lane 2: U87MG (Human) Cell Lysate at 30 ug
Lane 3: U251 (Human) Cell Lysate at 30 ug
Lane 4: Huvec (Human) Cell Lysate at 30 ug
Primary: Anti-H3-K4-HMTase SETD7 (bs-6191R) IgG at 1/20000 dilution
Predicted band size: 49 kD
Observed band size: 47 kD