

**bs-6188R****[ Primary Antibody ]**

www.bioss.com.cn

sales@bioss.com.cn

techsupport@bioss.com.cn

400-901-9800

**Alpha 2 antiplasmin Rabbit pAb****— DATASHEET —**

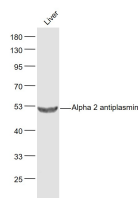
|  |                      |
|--|----------------------|
| <b>Host:</b> Rabbit  | <b>Isotype:</b> IgG  |
| <b>Clonality:</b> Polyclonal   |                      |
| <b>GeneID:</b> 5345  | <b>SWISS:</b> P08697 |
| <b>Target:</b> Alpha 2 antiplasmin   |                      |
| <b>Immunogen:</b> KLH conjugated synthetic peptide derived from human SERPINF2: 161-260/491.   |                      |
| <b>Purification:</b> affinity purified by Protein A  |                      |
| <b>Concentration:</b> 1mg/ml   |                      |
| <b>Storage:</b> 0.01M TBS (pH7.4) with 1% BSA, 0.02% Proclin300 and 50% Glycerol.<br>Shipped at 4°C. Store at -20°C for one year. Avoid repeated freeze/thaw cycles.   |                      |
| <b>Background:</b> Alpha 2 Antiplasmin is a member of the serpin family of serine protease inhibitors. The protein is a major inhibitor of plasmin, which degrades fibrin and various other proteins. Consequently, the proper function of this gene has a major role in regulating the blood clotting pathway. Mutations in this gene result in alpha-2-plasmin inhibitor deficiency, which is characterized by severe hemorrhagic diathesis. Multiple transcript variants encoding different isoforms have been found for this gene. |                      |

**Applications:** **WB** (1:500-2000)  
**IHC-P** (1:100-500)  
**IHC-F** (1:100-500)  
**IF** (1:100-500)

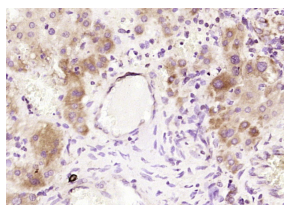
**Reactivity:** Human, Mouse, Rat  
(predicted: Rabbit, Dog, Horse)

**Predicted MW.:** 50 kDa

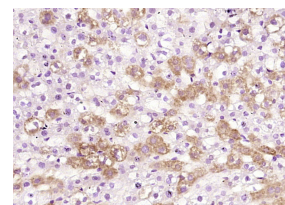
**Subcellular Location:** Secreted

**— VALIDATION IMAGES —**

Sample: Liver (Mouse) Lysate at 40 ug Primary: Anti- Alpha 2 antiplasmin (bs-6188R) at 1/1000 dilution Secondary: IRDye800CW Goat Anti-Rabbit IgG at 1/20000 dilution Predicted band size: 50 kD Observed band size: 52 kD



Paraformaldehyde-fixed, paraffin embedded (human liver); Antigen retrieval by boiling in sodium citrate buffer (pH6.0) for 15min; Block endogenous peroxidase by 3% hydrogen peroxide for 20 minutes; Blocking buffer (normal goat serum) at 37°C for 30min; Antibody incubation with (Alpha 2 antiplasmin) Polyclonal Antibody, Unconjugated (bs-6188R) at 1:200 overnight at 4°C, followed by operating according to SP Kit(Rabbit) (sp-0023) instructions and DAB staining.



Paraformaldehyde-fixed, paraffin embedded (rat liver); Antigen retrieval by boiling in sodium citrate buffer (pH6.0) for 15min; Block endogenous peroxidase by 3% hydrogen peroxide for 20 minutes; Blocking buffer (normal goat serum) at 37°C for 30min; Antibody incubation with (Alpha 2 antiplasmin) Polyclonal Antibody, Unconjugated (bs-6188R) at 1:200 overnight at 4°C, followed by operating according to SP Kit(Rabbit) (sp-0023) instructions and DAB staining.

**— SELECTED CITATIONS —**

- **[IF=3.989]** Schmal et al. Hematopoietic Stem and Progenitor Cell Expansion in Contact with Mesenchymal Stromal Cells in a Hanging Drop Model Uncovers Disadvantages of 3D Culture. (2016) Stem.Cells.Int. 2016:4148093 IF ;Human, Mouse, Rat, Dog, Horse, Rabbit. 26839560