

**bs-6193R**

**[ Primary Antibody ]**

## SMYD2 Rabbit pAb

**Bioss**  
ANTIBODIES

www.bioss.com.cn

sales@bioss.com.cn

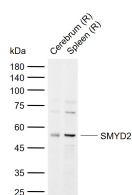
techsupport@bioss.com.cn

400-901-9800

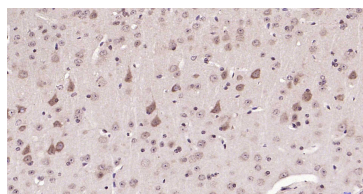
### — DATASHEET —

<b>Host:</b> Rabbit	<b>Isotype:</b> IgG	<b>Applications:</b> <b>WB</b> (1:500-2000) <b>IHC-P</b> (1:100-500) <b>IHC-F</b> (1:100-500) <b>IF</b> (1:100-500)  <b>Reactivity:</b> Mouse, Rat (predicted: Human, Pig, Cow, Dog)  <b>Predicted MW.:</b> 50 kDa  <b>Subcellular Location:</b> Cytoplasm ,Nucleus
<b>Clonality:</b> Polyclonal		
<b>GeneID:</b> 56950	<b>SWISS:</b> Q9NRG4	
<b>Target:</b> SMYD2		
<b>Immunogen:</b> KLH conjugated synthetic peptide derived from human SMYD2: 245-340/433.		
<b>Purification:</b> affinity purified by Protein A		
<b>Concentration:</b> 1mg/ml		
<b>Storage:</b> 0.01M TBS (pH7.4) with 1% BSA, 0.02% Proclin300 and 50% Glycerol. Shipped at 4°C. Store at -20°C for one year. Avoid repeated freeze/thaw cycles.		
<b>Background:</b> SET domain-containing proteins, such as SMYD2, catalyze lysine methylation (Brown et al., 2006 [PubMed 16805913]).[supplied by OMIM, Nov 2008]		

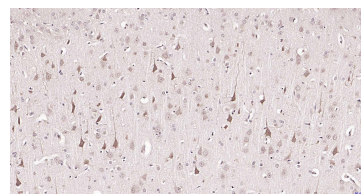
### — VALIDATION IMAGES —



Sample: Lane 1: Rat Cerebrum tissue lysates  
Lane 2: Rat Spleen tissue lysates Primary: Anti-SMYD2 (bs-6193R) at 1/1000 dilution Secondary: IRDye800CW Goat Anti-Rabbit IgG at 1/20000 dilution Predicted band size: 50 kDa Observed band size: 53 kDa



Paraformaldehyde-fixed, paraffin embedded Mouse Cerebrum; Antigen retrieval by boiling in sodium citrate buffer (pH6.0) for 15 min; Antibody incubation with SMYD2 Polyclonal Antibody, Unconjugated (bs-6193R) at 1:200 overnight at 4°C, followed by conjugation to the SP Kit (Rabbit, SP-0023) and DAB (C-0010) staining.



Paraformaldehyde-fixed, paraffin embedded Rat Cerebrum; Antigen retrieval by boiling in sodium citrate buffer (pH6.0) for 15 min; Antibody incubation with SMYD2 Polyclonal Antibody, Unconjugated (bs-6193R) at 1:200 overnight at 4°C, followed by conjugation to the SP Kit (Rabbit, SP-0023) and DAB (C-0010) staining.