

**bs-6262R****[ Primary Antibody ]****TRIB2 Rabbit pAb****Bioss**  
**ANTIBODIES**

www.bioss.com.cn

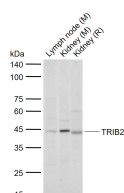
sales@bioss.com.cn

techsupport@bioss.com.cn

400-901-9800

**— DATASHEET —**

<b>Host:</b> Rabbit	<b>Isotype:</b> IgG	<b>Applications:</b> WB (1:500-2000)
<b>Clonality:</b> Polyclonal		<b>Reactivity:</b> Mouse, Rat (predicted: Human, Rabbit, Pig, Cow, Chicken, Dog, Horse)
<b>GeneID:</b> 28951	<b>SWISS:</b> Q92519	<b>Predicted MW.:</b> 39 kDa
<b>Target:</b> TRIB2		<b>Subcellular Location:</b> Cytoplasm
<b>Immunogen:</b> KLH conjugated synthetic peptide derived from human TRIB2: 151-250/343.		
<b>Purification:</b> affinity purified by Protein A		
<b>Concentration:</b> 1mg/ml		
<b>Storage:</b> 0.01M TBS (pH7.4) with 1% BSA, 0.02% Proclin300 and 50% Glycerol. Shipped at 4°C. Store at -20°C for one year. Avoid repeated freeze/thaw cycles.		
<b>Background:</b> Interacts with MAPK kinases and regulates activation of MAP kinases. Does not display kinase activity.		

**— VALIDATION IMAGES —**

Sample: Lane 1: Mouse Lymph node tissue  
lysates Lane 2: Mouse Kidney tissue lysates Lane  
3: Rat Kidney tissue lysates Primary: Anti-TRIB2  
(bs-6262R) at 1/1000 dilution Secondary:  
IRDye800CW Goat Anti-Rabbit IgG at 1/20000  
dilution Predicted band size: 39 kDa Observed  
band size: 42 kDa