

bs-14512R**[Primary Antibody]****EFCAB4B Rabbit pAb****BioSS**
ANTIBODIES

www.bioss.com.cn

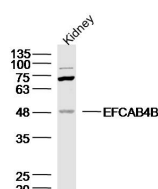
sales@bioss.com.cn

techsupport@bioss.com.cn

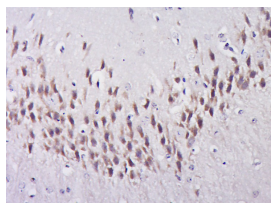
400-901-9800

— DATASHEET —

Host: Rabbit	Isotype: IgG	Applications: WB (1:500-2000)
Clonality: Polyclonal		IHC-P (1:100-500)
GeneID: 84766	SWISS: Q9BSW2	IHC-F (1:100-500)
Target: EFCAB4B		IF (1:100-500)
Immunogen: KLH conjugated synthetic peptide derived from human EFCAB4B: 201-300/1503.		Reactivity: Mouse (predicted: Human, Rat, Rabbit, GuineaPig, Horse)
Purification: affinity purified by Protein A		
Concentration: 1mg/ml		Predicted MW.: 46/83 kDa
Storage: 0.01M TBS (pH7.4) with 1% BSA, 0.02% Proclin300 and 50% Glycerol. Shipped at 4°C. Store at -20°C for one year. Avoid repeated freeze/thaw cycles.		Subcellular Location: Cytoplasm
Background: EF-CAB4B is a 395 amino acid protein belonging to the EF-CAB4 family. Localizing to cytoplasm, EF-CAB4B contains two EF-hand domains and exists as two alternatively spliced isoforms. At low Ca ²⁺ concentrations, EF-CAB4B acts as a calcium-sensor, facilitating the clustering of Orai1 and Stim1 at the junctional regions between plasma membrane and endoplasmic reticulum, leading to regulation of CRAC channel activation. The gene encoding EF-CAB4B maps to human chromosome 12p13.32. Encoding over 1,100 genes within 132 million bases, chromosome 12 makes up about 4.5% of the human genome. A number of skeletal deformities are linked to chromosome 12 including hypochondrogenesis, achondrogenesis and Kniest dysplasia.		

— VALIDATION IMAGES —

Sample: Kidney (Mouse) Lysate at 40 ug Primary:
Anti-EFCAB4B (bs-14512R) at 1/300 dilution
Secondary: IRDye800CW Goat Anti-Rabbit IgG at
1/20000 dilution Predicted band size: 46/83 kD
Observed band size: 48 kD



Paraformaldehyde-fixed, paraffin embedded (Mouse brain); Antigen retrieval by boiling in sodium citrate buffer (pH6.0) for 15min; Block endogenous peroxidase by 3% hydrogen peroxide for 20 minutes; Blocking buffer (normal goat serum) at 37°C for 30min; Antibody incubation with (EFCAB4B) Polyclonal Antibody, Unconjugated (bs-14512R) at 1:400 overnight at 4°C, followed by operating according to SP Kit(Rabbit) (sp-0023) instructions and DAB staining.