

**bs-6176R****[ Primary Antibody ]****RAB8A Rabbit pAb****Bioss**  
**ANTIBODIES**

www.bioss.com.cn

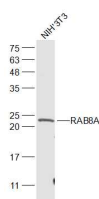
sales@bioss.com.cn

techsupport@bioss.com.cn

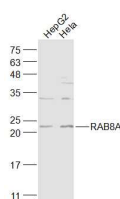
400-901-9800

**— DATASHEET —**

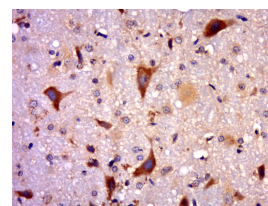
<b>Host:</b> Rabbit <b>Clonality:</b> Polyclonal <b>GeneID:</b> 4218 <b>Target:</b> RAB8A <b>Immunogen:</b> KLH conjugated synthetic peptide derived from human RAB8A: 101-207/207. <b>Purification:</b> affinity purified by Protein A <b>Concentration:</b> 1mg/ml <b>Storage:</b> 0.01M TBS (pH7.4) with 1% BSA, 0.02% Proclin300 and 50% Glycerol. Shipped at 4°C. Store at -20°C for one year. Avoid repeated freeze/thaw cycles. <b>Background:</b> The protein encoded by this gene is a member of the RAS superfamily which are small GTP/GDP-binding proteins with an average size of 200 amino acids. The RAS-related proteins of the RAB/YPT family may play a role in the transport of proteins from the endoplasmic reticulum to the Golgi and the plasma membrane. This protein shares 97%, 96%, and 51% similarity with the dog RAB8, mouse MEL, and mouse YPT1 proteins, respectively and contains the 4 GTP/GDP-binding sites that are present in all the RAS proteins. The putative effector-binding site of this protein is similar to that of the RAB/YPT proteins. However, this protein contains a C-terminal CAAX motif that is characteristic of many RAS superfamily members but which is not found in YPT1 and the majority of RAB proteins. Although this gene was isolated as a transforming gene from a melanoma cell line, no linkage between MEL and malignant melanoma has been demonstrable. This oncogene is located 800 kb distal to MY09B on chromosome 19p13.1.	<b>Isotype:</b> IgG <b>SWISS:</b> P61006	<b>Applications:</b> <b>WB</b> (1:500-2000) <b>IHC-P</b> (1:100-500) <b>IHC-F</b> (1:100-500) <b>IF</b> (1:100-500) <b>Reactivity:</b> Human, Mouse, Rat (predicted: Sheep, Cow, Chicken) <b>Predicted MW.:</b> 23 kDa <b>Subcellular Location:</b> Cell membrane ,Cytoplasm
---	---	---

**— VALIDATION IMAGES —**

Sample: NIH/3T3(Mouse) Cell Lysate at 30 ug  
Primary: Anti-RAB8A (bs-6176R) at 1/1000  
dilution Secondary: IRDye800CW Goat Anti-Rabbit IgG at 1/20000 dilution Predicted band size: 23 kD Observed band size: 23 kD



Sample: HepG2(Human) Cell Lysate at 30 ug  
Hela(Human) Cell Lysate at 30 ug Primary: Anti-RAB8A (bs-6176R) at 1/1000 dilution Secondary: IRDye800CW Goat Anti-Rabbit IgG at 1/20000 dilution Predicted band size: 23 kD Observed band size: 23 kD



Paraformaldehyde-fixed, paraffin embedded (rat brain); Antigen retrieval by boiling in sodium citrate buffer (pH6.0) for 15min; Block endogenous peroxidase by 3% hydrogen peroxide for 20 minutes; Blocking buffer (normal goat serum) at 37°C for 30min; Antibody incubation with (RAB8A) Polyclonal Antibody, Unconjugated (bs-6176R) at 1:500 overnight at 4°C, followed by a conjugated secondary (sp-0023) for 20 minutes and DAB staining.

**— SELECTED CITATIONS —**

- **[IF=11.4]** Chao Tang. et al. GPR137-RAB8A activation promotes ovarian cancer development via the Hedgehog pathway J EXP CLIN CANC RES. 2025 Jan 24;44(1):22. IHC ;Human. 39856733

Important Note: This product as supplied is intended for research use only, not for use in human, therapeutic or diagnostic applications.

- **[IF=4.5]** Meiqi Xu. et al. Methyl- $\beta$ -cyclodextrin Enhances Tumor Cellular Uptake and Accumulation of  $\alpha$ -Linolenic Acid–Paclitaxel Conjugate Nanoparticles. MOL PHARMACEUT. 2024;XXXX(XXX):XXX-XXX IF ;Human. 39495317
- **[IF=2.742]** Liu, Yanrong. et al. Cinnamaldehyde affects lipid droplets metabolism after adipogenic differentiation of C2C12 cells. MOL BIOL REP. 2022 Dec;;1-7 WB ;Mouse. 36538173