

**bs-14508R****[ Primary Antibody ]****phospho-EEF1A2 (Ser358) Rabbit pAb****Bioss**  
**ANTIBODIES**

www.bioss.com.cn

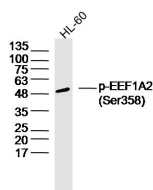
sales@bioss.com.cn

techsupport@bioss.com.cn

400-901-9800

**— DATASHEET —**

<b>Host:</b> Rabbit	<b>Isotype:</b> IgG	<b>Applications:</b> WB (1:500-2000)
<b>Clonality:</b> Polyclonal		<b>Reactivity:</b> Human (predicted: Mouse, Rat)
<b>GeneID:</b> 1917	<b>SWISS:</b> Q05639	
<b>Target:</b> EEF1A2 (Ser358)		<b>Predicted MW.:</b> 50 kDa
<b>Immunogen:</b> KLH conjugated Synthesised phosphopeptide derived from human EEF1A2 around the phosphorylation site of Ser358: GY(p-S)PV.		<b>Subcellular Location:</b> Nucleus
<b>Purification:</b> affinity purified by Protein A		
<b>Concentration:</b> 1mg/ml		
<b>Storage:</b> 0.01M TBS (pH7.4) with 1% BSA, 0.02% Proclin300 and 50% Glycerol. Shipped at 4°C. Store at -20°C for one year. Avoid repeated freeze/thaw cycles.		
<b>Background:</b> Elongation factor 1 alpha 2 (EF-1 alpha2) is a eukaryotic protein translation factor that is expressed in terminally differentiated cells of skeletal muscle, heart, and certain areas of the brain. Along with protein synthesis, EF-1 alpha2 also plays a role in cytoskeletal remodelling and apoptosis. The gene encoding for EF-1 alpha2 maps to chromosome 20q13. Wasted (wst) refers to a spontaneous autosomal recessive mutation in which this gene is deleted, and it leads to tremors and disturbances of gait shortly after weaning, followed by motor neuron degeneration, paralysis, and death by about 28 days in mice. EF-1 alpha2 has the ability to transform mammalian cells and is highly expressed in tumors of the ovary, breast, and lung, thereby proving a good candidate for an oncogene. In addition to this, EF-1 alpha2 enhances focus formation, allows anchorage-independent growth, and decreases the doubling time of rodent fibroblasts.		

**— VALIDATION IMAGES —**

Sample: HL-60 Cell (Human) Lysate at 40 ug  
Primary: Anti- phospho-EEF1A2 (Ser358)  
(bs-14508R) at 1/300 dilution Secondary:  
IRDye800CW Goat Anti-Rabbit IgG at 1/20000  
dilution Predicted band size: 50 kD Observed  
band size: 50 kD