

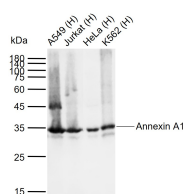
**bsm-31218M****[ Primary Antibody ]****Annexin A1 Mouse mAb****BioSS**  
**ANTIBODIES**

www.bioss.com.cn

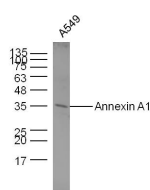
sales@bioss.com.cn

techsupport@bioss.com.cn

400-901-9800

**— DATASHEET —****Host:** Mouse**Clonality:** Monoclonal**GeneID:** 301**Target:** Annexin A1**Purification:** affinity purified by Protein A**Concentration:** 1mg/ml**Storage:** Preservative: 0.02% Proclin300, Constituents: 1% BSA, 0.01M PBS, pH7.4.  
Shipped at 4°C. Store at -20°C for one year. Avoid repeated freeze/thaw cycles.**Background:** This gene encodes a protein that belongs to a family of Ca(2+) dependent phospholipid binding proteins which have a molecular weight of approximately 35,000 to 40,000 and are preferentially located on the cytosolic face of the plasma membrane. Annexin I protein has an apparent relative molecular mass of 40 kDa, with phospholipase A2 inhibitory activity. Since phospholipase A2 is required for the biosynthesis of the potent mediators of inflammation, prostaglandins and leukotrienes, annexin I may have potential anti inflammatory activity.**Isotype:** IgG**CloneNo.:** 4G5**SWISS:** P04083**Applications:** **WB** (1:500-1000)**IF** (1:100-500)**ELISA** (1:5000-10000)**Reactivity:** Human, Mouse, Rat**Predicted  
MW.:** 38 kDa**Subcellular  
Location:** Cell membrane**— VALIDATION IMAGES —**

Sample: Lane 1: Human A549 cell lysates Lane 2: Human Jurkat cell lysates Lane 3: Human HeLa cell lysates Lane 4: Human K562 cell lysates  
Primary: Anti-Annexin A1 (bsm-31218M) at 1/1000 dilution Secondary: IRDye800CW Goat Anti-Mouse IgG at 1/20000 dilution Predicted band size: 38 kDa Observed band size: 35 kDa



Sample: A549 Cell (Human) Lysate at 30 ug  
Primary: Anti-Annexin A1 (Bsm- 31218M) at 1/300 dilution Secondary: IRDye800CW Goat Anti- Mouse IgG at 1/20000 dilution Predicted band size: 38 kD Observed band size: 35 kD