

phospho-14-3-3 epsilon (Thr232) Rabbit pAb

Catalog Number: bs-5590R

Target Protein: phospho-14-3-3 epsilon (Thr232)

Concentration: 1mg/ml

Form: Liquid

Host: Rabbit

Clonality: Polyclonal

Isotype: IgG

Applications: Flow-Cyt (1µg/Test)

Reactivity: Human (predicted:Mouse, Rat, Sheep, Cow)

Predicted MW: 29 kDa

Entrez Gene: 7531

Swiss Prot: P62258

Source: KLH conjugated Synthesised phosphopeptide derived from human 14-3-3E around the phosphorylation site of Thr232: LW(p-T)SD.

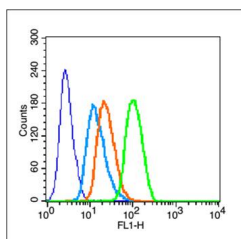
Purification: affinity purified by Protein A

Storage: 0.01M TBS (pH7.4) with 1% BSA, 0.02% Proclin300 and 50% Glycerol.

Shipped at 4°C. Store at -20°C for one year. Avoid repeated freeze/thaw cycles.

Background: Adapter protein implicated in the regulation of a large spectrum of both general and specialized signaling pathway. Binds to a large number of partners, usually by recognition of a phosphoserine or phosphothreonine motif. Binding generally results in the modulation of the activity of the binding partner.

VALIDATION IMAGES



Blank control (blue line): MCF7, fixed with 70% ethanol (Overnight at 4°C) and then permeabilized with 90% ice-cold methanol for 30 min on ice Primary Antibody (green line): Rabbit Anti-phospho-14-3-3 epsilon (Thr232) antibody (bs-5590R), Dilution: 3µg / 10⁶ cells; Isotype Control Antibody (orange line): Rabbit IgG . Secondary Antibody (white blue line): Goat anti-rabbit IgG-FITC, Dilution: 1µg / test.