

bs-1838R**[Primary Antibody]****KLF10 Rabbit pAb****Bioss**
ANTIBODIES

www.bioss.com.cn

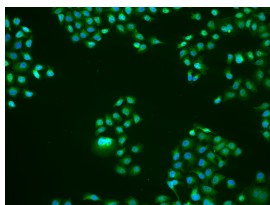
sales@bioss.com.cn

techsupport@bioss.com.cn

400-901-9800

— DATASHEET —

Host: Rabbit	Isotype: IgG	Applications: ICC/IF (1:25)
Clonality: Polyclonal		Reactivity: Human (predicted: Mouse, Rat)
GeneID: 7071	SWISS: Q13118	
Target: KLF10		Predicted MW.: 53 kDa
Immunogen: KLH conjugated synthetic peptide derived from human TIEG1: 401-480/480.		Subcellular Location: Nucleus
Purification: affinity purified by Protein A		
Concentration: 1mg/ml		
Storage: 0.01M TBS (pH7.4) with 1% BSA, 0.02% Proclin300 and 50% Glycerol. Shipped at 4°C. Store at -20°C for one year. Avoid repeated freeze/thaw cycles.		
Background: KLF10 is a transcription factor that plays a role in the regulation of cell growth. It binds to the consensus sequence 5'-GGTGTG-3'. KLF10 plays a role in the response to TGFbeta (through the TGFbeta/Smad signalling pathway) and estrogen. In both cases, KLF10 induces or repressed gene transcription to enhance the TGFbeta/Smad signalling pathway, as well as other pathways, to regulate cell proliferation, differentiation and apoptosis. KLF10 has been shown to have a role in skeletal disease (osteopenia/osteoporosis), hypertrophic cardiomyopathy, and breast and prostate cancer.		

— VALIDATION IMAGES —

HeLa cell; 4% Paraformaldehyde-fixed; Triton X-100 at room temperature for 20 min; Blocking buffer (normal goat serum, C-0005) at 37°C for 20 min; Antibody incubation with (KLF10) polyclonal Antibody, Unconjugated (bs-1838R) 1:25, 90 minutes at 37°C; followed by a conjugated Goat Anti-Rabbit IgG antibody at 37°C for 90 minutes, DAPI (blue, C02-04002) was used to stain the cell nuclei.