

bs-2047R**[Primary Antibody]****Bioss**
ANTIBODIES

www.bioss.com.cn

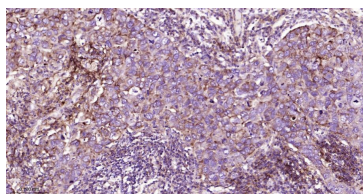
sales@bioss.com.cn

techsupport@bioss.com.cn

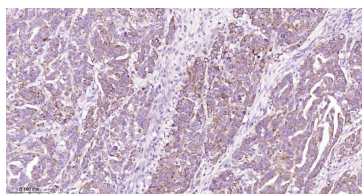
400-901-9800

CPT1A Rabbit pAb**— DATASHEET —**

Host: Rabbit	Isotype: IgG	Applications: IHC-P (1:100-500) IHC-F (1:100-500) IF (1:100-500)
Clonality: Polyclonal		Reactivity: Human, Mouse, Rat
GeneID: 1374	SWISS: P50416	
Target: CPT1A		
Immunogen: KLH conjugated synthetic peptide derived from human CPT1A: 1-100/773.		
Purification: affinity purified by Protein A		Predicted MW.: 86 kDa
Concentration: 1mg/ml		Subcellular Location: Cytoplasm
Storage: 0.01M TBS (pH7.4) with 1% BSA, 0.02% Proclin300 and 50% Glycerol. Shipped at 4°C. Store at -20°C for one year. Avoid repeated freeze/thaw cycles.		
Background: The mitochondrial oxidation of long-chain fatty acids is initiated by the sequential action of carnitine palmitoyltransferase I (which is located in the outer membrane and is detergent-labile) and carnitine palmitoyltransferase II (which is located in the inner membrane and is detergent-stable), together with a carnitine-acylcarnitine translocase. CPT I is the key enzyme in the carnitine-dependent transport across the mitochondrial inner membrane and its deficiency results in a decreased rate of fatty acid beta-oxidation. Alternatively spliced transcript variants encoding different isoforms have been found for this gene. [provided by RefSeq, Jul 2008].		

— VALIDATION IMAGES —

Paraformaldehyde-fixed, paraffin embedded Human Breast Cancer; Antigen retrieval by boiling in sodium citrate buffer (pH6.0) for 15 min; Antibody incubation with CPT1A Polyclonal Antibody, Unconjugated (bs-2047R) at 1:200 overnight at 4°C, followed by conjugation to the bs-0295G-HRP and DAB (C-0010) staining.



Paraformaldehyde-fixed, paraffin embedded Human Ovarian Cancer; Antigen retrieval by boiling in sodium citrate buffer (pH6.0) for 15 min; Antibody incubation with CPT1A Polyclonal Antibody, Unconjugated (bs-2047R) at 1:200 overnight at 4°C, followed by conjugation to the bs-0295G-HRP and DAB (C-0010) staining.

— SELECTED CITATIONS —

- **[IF=6.7]** Yan Zhang. et al. Pteroin B improves cognitive dysfunction by promoting microglia M1/M2 polarization through inhibiting Klf5/Parp14 pathway. PHYTOMEDICINE. 2024 Oct;;156152 WB ;Mouse. 39413455
- **[IF=7.425]** Kaiyang Chen. et al. Oligosaccharide and short-chain fatty acid: A double-edged sword in obese mice by regulating food intake and fat synthesis. FOOD RES INT. 2022 Sep;159:111619 WB ;Mouse. 35940810
- **[IF=4.55]** Fan, Chen-Yu, et al. "Betaine supplementation protects against high fructose-induced renal injury in rats." The Journal of Nutritional Biochemistry (2013). WB ;="Rat". 24456735
- **[IF=5.4]** Chunqiu Fang. et al. Tiaogan Jiejiu Tongluo Formula attenuated alcohol-induced chronic liver injury by regulating lipid metabolism in rats. J ETHNOPHARMACOL. 2023 Dec;317:116838 WB ;Rat. 37355081

Important Note: This product as supplied is intended for research use only, not for use in human, therapeutic or diagnostic applications.

- **[IF=4.1]** Baoming Tian. et al. Yellow leaf green tea modulates AMPK/ACC/SREBP1c signaling pathway and gut microbiota in high-fat diet-induced mice to alleviate obesity. J SCI FOOD AGR. 2024 Feb;; WB ;Mouse. 38407390