

bs-1825R**[Primary Antibody]****Inhibin beta B Rabbit pAb****BioSS**
ANTIBODIES

www.bioss.com.cn

sales@bioss.com.cn

techsupport@bioss.com.cn

400-901-9800

— DATASHEET —

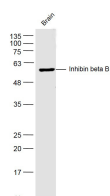
Host: Rabbit	Isotype: IgG
Clonality: Polyclonal	
GeneID: 3625	SWISS: P09529
Target: Inhibin beta B	
Immunogen: KLH conjugated synthetic peptide derived from human Inhibin beta B: 251-350/407.	
Purification: affinity purified by Protein A	
Concentration: 1mg/ml	
Storage: 0.01M TBS (pH7.4) with 1% BSA, 0.02% Proclin300 and 50% Glycerol. Shipped at 4°C. Store at -20°C for one year. Avoid repeated freeze/thaw cycles.	
Background: The inhibin beta B subunit joins the alpha subunit to form a pituitary FSH secretion inhibitor. Inhibin has been shown to regulate gonadal stromal cell proliferation negatively and to have tumour-suppressor activity. In addition, serum levels of inhibin have been shown to reflect the size of granulosa-cell tumors and can therefore be used as a marker for primary as well as recurrent disease. Because expression in gonadal and various extragonadal tissues may vary severalfold in a tissue-specific fashion, it is proposed that inhibin may be both a growth/differentiation factor and a hormone. Furthermore, the beta B subunit forms a homodimer, activin B, and also joins with the beta A subunit to form a heterodimer, activin AB, both of which stimulate FSH secretion. [provided by RefSeq].	

Applications: **WB** (1:500-2000)
IHC-P (1:100-500)
IHC-F (1:100-500)
IF (1:100-500)

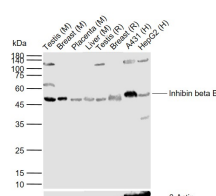
Reactivity: Human, Mouse, Rat
(predicted: Pig, Sheep, Cow, Dog, GuineaPig)

Predicted MW.: 13/45 kDa

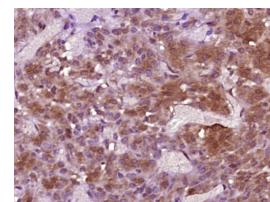
Subcellular Location: Secreted

— VALIDATION IMAGES —

Sample: Brain (Mouse) Lysate at 40 ug Primary: Anti- Inhibin beta B (bs-1825R) at 1/300 dilution
Secondary: IRDye800CW Goat Anti-Rabbit IgG at 1/20000 dilution Predicted band size: 45 kD
Observed band size: 50 kD



Sample: Lane 1: Mouse Testis tissue lysates Lane 2: Mouse Breast tissue lysates Lane 3: Mouse Placenta tissue lysates Lane 4: Mouse Liver tissue lysates Lane 5: Rat Testis tissue lysates Lane 6: Rat Breast tissue lysates Lane 7: Human A431 cell lysates Lane 8: Human HepG2 cell lysates Primary: Anti- Inhibin beta B (bs-1825R) at 1/1000 dilution Secondary: IRDye800CW Goat Anti-Rabbit IgG at 1/20000 dilution Predicted band size: 13/45 kDa Observed band size: 46 kDa



Paraformaldehyde-fixed, paraffin embedded (rat ovary tissue); Antigen retrieval by boiling in sodium citrate buffer (pH6.0) for 15min; Block endogenous peroxidase by 3% hydrogen peroxide for 20 minutes; Blocking buffer (normal goat serum) at 37°C for 30min; Antibody incubation with (Inhibin beta B) Polyclonal Antibody, Unconjugated (bs-1825R) at 1:400 overnight at 4°C, followed by operating according to SP Kit(Rabbit) (sp-0023) instructions and DAB staining.

— SELECTED CITATIONS —

- **[IF=3.998]** A. Ikeda. et al. Follistatin expressed in mechanically-damaged salivary glands of male mice induces proliferation of CD49f + cells. Sci Rep-Uk. 2020 Nov;10(1):1-14 IHC ;Mouse. 33203957