

**bs-1107R****[ Primary Antibody ]**

**Bioss**  
ANTIBODIES

www.bioss.com.cn

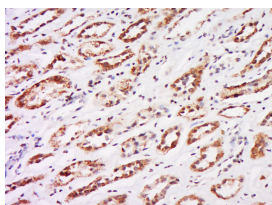
sales@bioss.com.cn

techsupport@bioss.com.cn

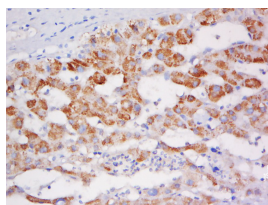
400-901-9800

**PTHLH Rabbit pAb****— DATASHEET —**

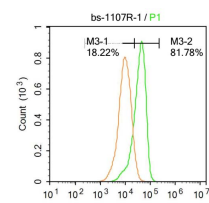
<b>Host:</b> Rabbit	<b>Isotype:</b> IgG	<b>Applications:</b> IHC-P (1:100-500) <b>IHC-F</b> (1:100-500) <b>IF</b> (1:100-500) <b>Flow-Cyt</b> (1ug/test)  <b>Reactivity:</b> Human, Mouse (predicted: Rat, Rabbit, Pig, Sheep, Cow, Dog, Horse)  <b>Predicted MW.:</b> 16 kDa  <b>Subcellular Location:</b> Secreted ,Cytoplasm ,Nucleus
<b>Clonality:</b> Polyclonal		
<b>GeneID:</b> 5744	<b>SWISS:</b> P12272	
<b>Target:</b> PTHLH		
<b>Immunogen:</b> KLH conjugated synthetic peptide derived from human PTHLH: 101-177/177.		
<b>Purification:</b> affinity purified by Protein A		
<b>Concentration:</b> 1mg/ml		
<b>Storage:</b> 0.01M TBS (pH7.4) with 1% BSA, 0.02% Proclin300 and 50% Glycerol. Shipped at 4°C. Store at -20°C for one year. Avoid repeated freeze/thaw cycles.		
<b>Background:</b> Parathyroid related protein (PTHLH), is a polypeptide hormone produced by almost every tissue of the body and is closely related to parathyroid hormone (PTH). It signals through its receptor, PTHR1, regulating endochondral bone development and epithelial-mesenchymal interactions during the formation of the mammary glands and teeth. The receptor for this hormone (PTHRP) is responsible for most cases of humoral hypercalcemia of malignancy.		

**— VALIDATION IMAGES —**

Tissue/cell: human kidney tissue; 4% Paraformaldehyde-fixed and paraffin-embedded; Antigen retrieval: citrate buffer (0.01M, pH 6.0), Boiling bathing for 15min; Block endogenous peroxidase by 3% Hydrogen peroxide for 30min; Blocking buffer (normal goat serum, C-0005) at 37°C for 20 min; Incubation: Anti-PTHLH Polyclonal Antibody, Unconjugated(bs-1107R) 1:500, overnight at 4°C, followed by conjugation to the secondary antibody(SP-0023) and DAB(C-0010) staining



Tissue/cell: human liver cancer; 4% Paraformaldehyde-fixed and paraffin-embedded; Antigen retrieval: citrate buffer (0.01M, pH 6.0), Boiling bathing for 15min; Block endogenous peroxidase by 3% Hydrogen peroxide for 30min; Blocking buffer (normal goat serum, C-0005) at 37°C for 20 min; Incubation: Anti-PTHLH Polyclonal Antibody, Unconjugated(bs-1107R) 1:500, overnight at 4°C, followed by conjugation to the secondary antibody(SP-0023) and DAB(C-0010) staining



Blank control:A549. Primary Antibody (green line): Rabbit Anti-PTHLH antibody (bs-1107R) Dilution: 1μg /10<sup>6</sup> cells; Isotype Control Antibody (orange line): Rabbit IgG . Secondary Antibody : Goat anti-rabbit IgG-PE Dilution: 1μg /test. Protocol The cells were fixed with 4% PFA (10min at room temperature)and then permeabilized with 20% PBST for 20 min at -20°C. The cells were then incubated in 5%BSA to block non-specific protein-protein interactions for 30 min at room temperature .Cells stained with Primary Antibody for 30 min at room temperature. The secondary antibody used for 40 min at room temperature. Acquisition of 20,000 events was performed.

**— SELECTED CITATIONS —**

- **[IF=3.36]** Zhao L et al. Reducing macrophage numbers alleviates temporomandibular joint ankylosis. Cell Tissue Res. 2019 Sep 14. IHC ;Human. 31522279