

bs-1070R**[Primary Antibody]****NPY1R Rabbit pAb****Bioss**
ANTIBODIES

www.bioss.com.cn

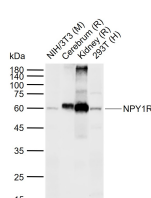
sales@bioss.com.cn

techsupport@bioss.com.cn

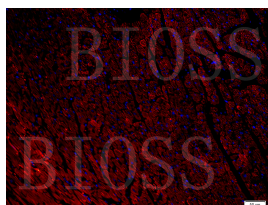
400-901-9800

— DATASHEET —

Host: Rabbit	Isotype: IgG	Applications: WB (1:500-2000)
Clonality: Polyclonal		IHC-P (1:100-500)
GeneID: 4886	SWISS: P25929	IHC-F (1:100-500)
Target: NPY1R		IF (1:100-500)
		ELISA (1:5000-10000)
Immunogen: KLH conjugated synthetic peptide derived from human NPY1R: 201-300/382.		Reactivity: Human, Mouse, Rat
Purification: affinity purified by Protein A		
Concentration: 1mg/ml		
Storage: 0.01M TBS (pH7.4) with 1% BSA, 0.02% Proclin300 and 50% Glycerol. Shipped at 4°C. Store at -20°C for one year. Avoid repeated freeze/thaw cycles.		Predicted MW.: 44 kDa
Background: Neuropeptide Y (NPY) is one of the most abundant neuropeptides in the mammalian nervous system and exhibits a diverse range of important physiologic activities, including effects on psychomotor activity, food intake, regulation of central endocrine secretion, and potent vasoactive effects on the cardiovascular system. There are two major subtypes of NPY (Y1 and Y2). The NPY Y1 receptors have been identified in a variety of tissues, including brain, spleen, small intestine, kidney, testis, placenta, breast, colon, ganglion, heart, and aortic smooth muscle. The Y2 receptor is found mainly in the central nervous system. NPY receptors are a member of the G protein-coupled receptor superfamily.		Subcellular Location: Cell membrane

— VALIDATION IMAGES —

Sample: Lane 1: Mouse NIH/3T3 tissue lysates
 Lane 2: Rat Cerebrum tissue lysates Lane 3: Rat
 Kidney tissue lysates Lane 4: Human 293T cell
 lysates Primary: Anti-NPY1R (bs-1070R) at 1/1000
 dilution Secondary: IRDye800CW Goat Anti-
 Rabbit IgG at 1/20000 dilution Predicted band
 size: 44 kDa Observed band size: 60 kDa



Tissue/cell: rat myocardium tissue;4%
 Paraformaldehyde-fixed and paraffin-
 embedded; Antigen retrieval: citrate buffer (0.01M, pH 6.0), Boiling bathing for 15min;
 Blocking buffer (normal goat serum,C-0005) at
 37°C for 20 min; Incubation: Anti-NPY1R
 Polyclonal Antibody, Unconjugated(bs-1070R)
 1:400, overnight at 4°C; The secondary antibody
 was Goat Anti-Rabbit IgG, PE
 conjugated(bs-0295G-PE)used at 1:200 dilution
 for 40 minutes at 37°C. DAPI(5ug/ml,blue,C-0033)
 was used to stain the cell nuclei

— SELECTED CITATIONS —

- **[IF=13]** Qihang Sun. et al.Mettl3-m6A-NPY axis governing neuron–microglia interaction regulates sleep amount of mice.CELL DISCOVERY.2025 Feb 4;11(1):10. IF ;Mouse. 39905012
- **[IF=5.711]** Kang X et al. Neuropeptide Y Acts Directly on Cartilage Homeostasis and Exacerbates Progression of Osteoarthritis through NPY2R. J Bone Miner Res. 2020 Feb 26. IHC,WB ;mouse. 32101625

Important Note: This product as supplied is intended for research use only, not for use in human, therapeutic or diagnostic applications.

- **[IF=5.682]** Tüfekci, Kıymet Kübra. et al. A Maternal High-Fat Diet Causes Anxiety-Related Behaviors by Altering Neuropeptide Y1 Receptor and Hippocampal Volumes in Rat Offspring: the Potential Effect of N-Acetylcysteine. MOL NEUROBIOL. 2022 Dec;;1-16 IHC ;Rat. 36502431
- **[IF=6.2]** Xuejun Yuan. et al. Multi-omics analysis explore the mechanism of deoxynivalenol inhibiting rabbit appetite through microbial-gut-brain axis..ECOTOXICOLOGY AND ENVIRONMENTAL SAFETY.2025 Feb;291:117849. Western blot ;Rabbit. 39965318
- **[IF=2.8]** Jinsong Liu. et al. Identification and multi-dimensional validation of mitochondrial permeability transition-driven necrosis-related model to assess the prognosis and immunotherapy value in breast cancer. EUROPEAN JOURNAL OF MEDICAL RESEARCH. 2025 Feb 18;30(1):113. IHC ;Rabbit. 39966932