

**bs-19372R****[ Primary Antibody ]****SAMD11 Rabbit pAb****BioSS**  
**ANTIBODIES**

www.bioss.com.cn

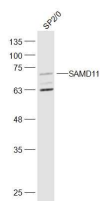
sales@bioss.com.cn

techsupport@bioss.com.cn

400-901-9800

**— DATASHEET —**

<b>Host:</b> Rabbit	<b>Isotype:</b> IgG	<b>Applications:</b> WB (1:500-2000)
<b>Clonality:</b> Polyclonal		<b>Reactivity:</b> Human (predicted: Mouse)
<b>GeneID:</b> 148398	<b>SWISS:</b> Q96NU1	
<b>Target:</b> SAMD11		
<b>Immunogen:</b> KLH conjugated synthetic peptide derived from human SAMD11: 101-200/681.		<b>Predicted MW.:</b> 73 kDa
<b>Purification:</b> affinity purified by Protein A		<b>Subcellular Location:</b> Nucleus
<b>Concentration:</b> 1mg/ml		
<b>Storage:</b> 0.01M TBS (pH7.4) with 1% BSA, 0.02% Proclin300 and 50% Glycerol. Shipped at 4°C. Store at -20°C for one year. Avoid repeated freeze/thaw cycles.		
<b>Background:</b> SAMD11 (Sterile Alpha Motif Domain Containing 11) is a Protein Coding gene. GO annotations related to this gene include transcription coactivator activity and PH domain binding. An important paralog of this gene is PHC3.		

**— VALIDATION IMAGES —**

Sp2/0(Human) Cell Lysate at 30 ug Primary: Anti-SAMD11 (bs-19372R) at 1/300 dilution  
Secondary: IRDye800CW Goat Anti-Rabbit IgG at 1/20000 dilution Predicted band size: 73 kD  
Observed band size: 73 kD