

bs-0937R**[Primary Antibody]****NPY2R Rabbit pAb****Bioss**
ANTIBODIES

www.bioss.com.cn

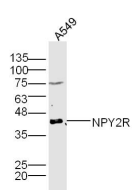
sales@bioss.com.cn

techsupport@bioss.com.cn

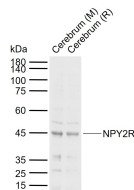
400-901-9800

— DATASHEET —

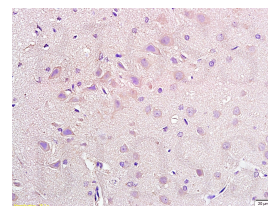
Host: Rabbit	Isotype: IgG	Applications: WB (1:500-2000)
Clonality: Polyclonal		IHC-P (1:100-500)
GeneID: 4887	SWISS: P49146	IHC-F (1:100-500)
Target: NPY2R		IF (1:100-500)
Immunogen: KLH conjugated synthetic peptide derived from human NPY2R: 301-381/381.		Reactivity: Human, Mouse, Rat (predicted: Pig)
Purification: affinity purified by Protein A		
Concentration: 1mg/ml		Predicted MW.: 43 kDa
Storage: 0.01M TBS (pH7.4) with 1% BSA, 0.02% Proclin300 and 50% Glycerol. Shipped at 4°C. Store at -20°C for one year. Avoid repeated freeze/thaw cycles.		Subcellular Location: Cell membrane
Background: Neuropeptide Y (NPY), a peptide widely expressed in the brain, acts through the protein G-coupled receptors Y1, Y2 and Y5. This peptide modulates many important functions such as the control of energy balance and anxiety. Its involvement in brain development has been less investigated. Neuropeptide Y (NPY) receptors are members of a G protein coupled receptor superfamily and they mediate a variety of physiological responses including feeding and vasoconstriction. The endogenous ligands of NPY receptors are a family of structurally related peptides, including NPY, peptide YY (PYY), and pancreatic polypeptide (PP). Increased activity of NPY and its receptors, Y1R, Y2R, and Y5R has been found in the brain in many forms of experimental obesity. Furthermore, several association studies have supported the association between NPY2R and obesity.		

— VALIDATION IMAGES —

Sample: A549 Cell Lysate at 30 ug Primary: Anti-NPY2R (bs-0937R) at 1/300 dilution Secondary: IRDye800CW Goat Anti-Rabbit IgG at 1/20000 dilution Predicted band size: 43 kD Observed band size: 43 kD



Sample: Lane 1: Mouse Cerebrium tissue lysates Lane 2: Rat Cerebrium tissue lysates Primary: Anti-NPY2R (bs-0937R) at 1/1000 dilution Secondary: IRDye800CW Goat Anti-Rabbit IgG at 1/20000 dilution Predicted band size: 43 kDa Observed band size: 45 kDa



Tissue/cell: rat brain tissue; 4% Paraformaldehyde-fixed and paraffin-embedded; Antigen retrieval: citrate buffer (0.01M, pH 6.0), Boiling bathing for 15min; Block endogenous peroxidase by 3% Hydrogen peroxide for 30min; Blocking buffer (normal goat serum, C-0005) at 37°C for 20 min; Incubation: Anti-NPY2R Polyclonal Antibody, Unconjugated(bs-0937R) 1:200, overnight at 4°C, followed by conjugation to the secondary antibody(SP-0023) and DAB(C-0010) staining

— SELECTED CITATIONS —

- **[IF=5.711]** Kang X et al. Neuropeptide Y Acts Directly on Cartilage Homeostasis and Exacerbates Progression of Osteoarthritis through NPY2R. J Bone Miner Res. 2020 Feb 26. IHC,WB,IF ;mouse. 32101625