

bs-3390R**[Primary Antibody]****phospho-SATB1 (Ser47) Rabbit pAb****BioSS**
ANTIBODIES

www.bioss.com.cn

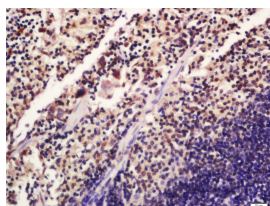
sales@bioss.com.cn

techsupport@bioss.com.cn

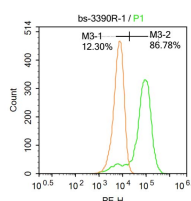
400-901-9800

— DATASHEET —

Host: Rabbit	Isotype: IgG	Applications: IHC-P (1:100-500)
Clonality: Polyclonal		IHC-F (1:100-500)
GeneID: 6304	SWISS: Q01826	IF (1:100-500)
Target: SATB1 (Ser47)		Flow-Cyt (1ug/test)
Immunogen: KLH conjugated Synthesised phosphopeptide derived from human SATB1 around the phosphorylation site of Ser47: LG(p-S)TG.		Reactivity: Human, Mouse (predicted: Rabbit, Pig, Cow, Chicken, Dog)
Purification: affinity purified by Protein A		
Concentration: 1mg/ml		Predicted MW.: 86 kDa
Storage: 0.01M TBS (pH7.4) with 1% BSA, 0.02% Proclin300 and 50% Glycerol. Shipped at 4°C. Store at -20°C for one year. Avoid repeated freeze/thaw cycles.		Subcellular Location: Cytoplasm
Background: This gene encodes a matrix protein which binds nuclear matrix and scaffold-associating DNAs through a unique nuclear architecture. The protein recruits chromatin-remodeling factors in order to regulate chromatin structure and gene expression. Multiple transcript variants encoding different isoforms have been found for this gene. [provided by RefSeq, Sep 2010]		

— VALIDATION IMAGES —

Tissue/cell: mouse spleen tissue; 4% Paraformaldehyde-fixed and paraffin-embedded; Antigen retrieval: citrate buffer (0.01M, pH 6.0), Boiling bathing for 15min; Block endogenous peroxidase by 3% Hydrogen peroxide for 30min; Blocking buffer (normal goat serum, C-0005) at 37°C for 20 min; Incubation: Anti-Phospho-SATB1 (Ser47) Polyclonal Antibody, Unconjugated (bs-3390R) 1:200, overnight at 4°C, followed by conjugation to the secondary antibody (SP-0023) and DAB (C-0010) staining



Blank control: Molt-4. Primary Antibody (green line): Rabbit Anti-Phospho-SATB1 (Ser47) antibody (bs-3390R) Dilution: 1µg / 10⁶ cells; Isotype Control Antibody (orange line): Rabbit IgG. Secondary Antibody: Goat anti-rabbit IgG-AF647 Dilution: 1µg / test. Protocol The cells were fixed with 4% PFA (10min at room temperature) and then permeabilized with 90% ice-cold methanol for 20 min at -20°C. The cells were then incubated in 5% BSA to block non-specific protein-protein interactions for 30 min at room temperature. Cells stained with Primary Antibody for 30 min at room temperature. The secondary antibody used for 40 min at room temperature. Acquisition of 20,000 events was performed.

— SELECTED CITATIONS —

- **[IF=8]** Huo FC et al. PAK5 promotes the migration and invasion of cervical cancer cells by phosphorylating SATB1. Cell Death Differ. 2019 Jun;26(6):994-1006. WB, ICC ; Human. 30082769
- **[IF=6.04]** Han, S., et al. "Phosphorylated SATB1 is associated with the progression and prognosis of glioma." Cell Death & Disease 4.10 (2013): e901. IHC ; Human. 24176859

Important Note: This product as supplied is intended for research use only, not for use in human, therapeutic or diagnostic applications.