

**bs-9523R****[ Primary Antibody ]****Bioss**  
ANTIBODIES

www.bioss.com.cn

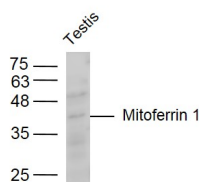
sales@bioss.com.cn

techsupport@bioss.com.cn

400-901-9800

**Mitoferrin 1 Rabbit pAb****— DATASHEET —**

<b>Host:</b> Rabbit	<b>Isotype:</b> IgG	<b>Applications:</b> WB (1:500-2000)
<b>Clonality:</b> Polyclonal		
<b>GeneID:</b> 51312	<b>SWISS:</b> Q9NYZ2	
<b>Target:</b> Mitoferrin 1		
<b>Immunogen:</b> KLH conjugated synthetic peptide derived from human Mitoferrin 1: 201-300/338.		
<b>Purification:</b> affinity purified by Protein A		<b>Reactivity:</b> Mouse (predicted: Human, Rat, Pig, Cow, Chicken, Dog, Horse)
<b>Concentration:</b> 1mg/ml		<b>Predicted MW.:</b> 37 kDa
<b>Storage:</b> 0.01M TBS (pH7.4) with 1% BSA, 0.02% Proclin300 and 50% Glycerol. Shipped at 4°C. Store at -20°C for one year. Avoid repeated freeze/thaw cycles.		<b>Subcellular Location:</b> Cell membrane
<b>Background:</b> Mitoferrin1, SLC25A37, belongs to the mitochondrial carrier family and contains 3 Solcar repeats. It is a mitochondrial iron transporter that specifically mediates iron uptake in developing erythroid cells and plays an essential role in heme biosynthesis.		

**— VALIDATION IMAGES —**

Sample: Testis (Mouse) Lysate at 40 ug Primary:

Anti-Mitoferrin 1 (bs-9523R) at 1/300 dilution

Secondary: IRDye800CW Goat Anti-Rabbit IgG at

1/20000 dilution Predicted band size: 37 kD

Observed band size: 37 kD