

bs-1686R**[Primary Antibody]****Cyclin F Rabbit pAb****BioSS**
ANTIBODIES

www.bioss.com.cn

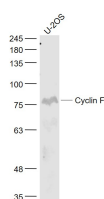
sales@bioss.com.cn

techsupport@bioss.com.cn

400-901-9800

— DATASHEET —

Host: Rabbit	Isotype: IgG	Applications: WB (1:500-2000)
Clonality: Polyclonal		
GeneID: 899	SWISS: P41002	
Target: Cyclin F		
Immunogen: KLH conjugated synthetic peptide derived from human Cyclin F: 451-550/786.		
Purification: affinity purified by Protein A		Reactivity: Human (predicted: Mouse, Rat, Rabbit, Pig, Cow, Chicken, Dog, Horse)
Concentration: 1mg/ml		
Storage: 0.01M TBS (pH7.4) with 1% BSA, 0.02% Proclin300 and 50% Glycerol. Shipped at 4°C. Store at -20°C for one year. Avoid repeated freeze/thaw cycles.		
Background: Cyclin F belongs to the F-box protein family which is characterized by an approximately 40 amino acid motif, the F-box. Such proteins constitute one of the four subunits of the ubiquitin protein ligase complex called SCFs (SKP1-cullin-F-box), which function in phosphorylation-dependent ubiquitination.		
		Predicted MW.: 86 kDa
		Subcellular Location: Cytoplasm ,Nucleus

— VALIDATION IMAGES —

Sample: U-2OS(Human) Cell Lysate at 30 ug
Primary: Anti- Cyclin F (bs-1686R) at 1/1000
dilution Secondary: IRDye800CW Goat Anti-
Rabbit IgG at 1/20000 dilution Predicted band
size: 86 kD Observed band size: 86 kD