

[Primary Antibody]

NCX3 Rabbit pAb



BioSS
ANTIBODIES

www.bioss.com.cn

sales@bioass.com.cn

techsupport@bioss.com.cn

400-901-9800

— DATASHEET

Host: Rabbit

Isotype: IgG

Applications: WB (1:500-2000)

Clonality: Polyclonal

GeneID: 6547

SWISS: P57103

Target: NCX3

Target: NCX3

Immunogen: KLH conjugated synthetic peptide derived from human NCX3: 641-740/927.

Purification: affinity purified by Protein A

Concentration: 1mg/ml

Storage: 0.01M TBS (pH7.4) with 1% BSA, 0.02% Proclin300 and 50% Glycerol.

Shipped at 4°C. Store at -20°C for one year. Avoid repeated freeze/thaw cycles.

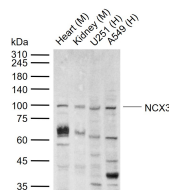
Background: SLC8A3 is a member of the sodium/calcium exchanger integral membrane protein family. Three mammalian isoforms in family 8 have been identified. Na⁺/Ca²⁺ exchange proteins are involved in maintaining Ca²⁺ homeostasis in a wide variety of cell types. The protein is regulated by intracellular calcium ions and is found in both the plasma membrane and intracellular organellar membranes, where exchange of Na⁺ for Ca²⁺ occurs in an electrogenic manner.

Reactivity: Human, Mouse
(predicted: Rat, Rabbit, Pig,
Cow, Chicken, Dog, Horse)

Predicted
MW.: 100 kDa

Subcellular Location: Cell membrane

— VALIDATION IMAGES



Sample: Lane 1: Mouse Heart tissue lysates Lane 2: Mouse Kidney tissue lysates Lane 3: Human U251 cell lysates Lane 4: Human A549 cell lysates
Primary: Anti-NCX3 (bs-2057R) at 1/1000 dilution
Secondary: IRDye800CW Goat Anti-Rabbit IgG at 1/20000 dilution Predicted band size: 100 kDa
Observed band size: 100 kDa

— SELECTED CITATIONS

- **[IF=3.201]** Zhang J et al. TRPV4 Complexes With the Na/Ca 2 Exchanger and IP 3 Receptor 1 to Regulate Local Intracellular Calcium and Tracheal Tension in Mice. *Front. Physiol.*, 06 December 2019. CoIP, WB ;Mouse. doi:10.3389/fphys.2019.01471