

**bs-1600R****[ Primary Antibody ]**

**Bioss**  
ANTIBODIES

www.bioss.com.cn

sales@bioss.com.cn

techsupport@bioss.com.cn

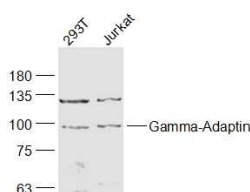
400-901-9800

## Gamma-Adaptin Rabbit pAb

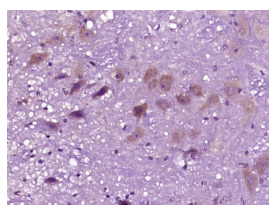
### — DATASHEET —

<b>Host:</b> Rabbit	<b>Isotype:</b> IgG	<b>Applications:</b> WB (1:500-2000) <b>IHC-P</b> (1:100-500) <b>IHC-F</b> (1:100-500) <b>IF</b> (1:100-500) <b>ICC/IF</b> (1:100-500)  <b>Reactivity:</b> Human, Mouse, Rat (predicted: Rabbit, Pig, Cow, Chicken, Dog)  <b>Predicted MW.:</b> 91 kDa  <b>Subcellular Location:</b> Cell membrane ,Cytoplasm
<b>Clonality:</b> Polyclonal		
<b>GeneID:</b> 164	<b>SWISS:</b> O43747	
<b>Target:</b> Gamma-Adaptin		
<b>Immunogen:</b> KLH conjugated synthetic peptide derived from human Gamma-Adaptin: 721-822/822.		
<b>Purification:</b> affinity purified by Protein A		
<b>Concentration:</b> 1mg/ml		
<b>Storage:</b> 0.01M TBS (pH7.4) with 1% BSA, 0.02% Proclin300 and 50% Glycerol. Shipped at 4°C. Store at -20°C for one year. Avoid repeated freeze/thaw cycles.		
<b>Background:</b> Adaptins are important components of clathrin-coated vesicles transporting ligand-receptor complexes from the plasma membrane or from the trans-Golgi network to lysosomes. The adaptin family of proteins is composed of four classes of molecules named alpha, beta, beta prime and gamma adaptins. Adaptins, together with medium and small subunits, form a heterotetrameric complex called an adaptor, whose role is to promote the formation of clathrin-coated pits and vesicles. The protein encoded by this gene is a gamma-adaptin protein and it belongs to the adaptor complexes large subunits family.		

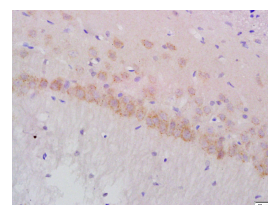
### — VALIDATION IMAGES —



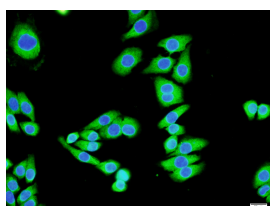
Sample: 293T(Human) Cell Lysate at 30 ug  
 Jurkat(Human) Cell Lysate at 30 ug  
 Primary: Anti-Gamma-Adaptin (bs-1600R) at 1/1000  
 dilution Secondary: IRDye800CW Goat Anti-Rabbit IgG at 1/20000 dilution  
 Predicted band size: 91 kD Observed band size: 91 kD



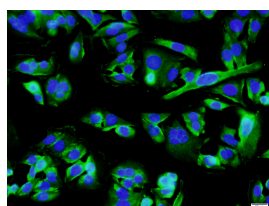
Paraformaldehyde-fixed, paraffin embedded (mouse brain tissue); Antigen retrieval by boiling in sodium citrate buffer (pH6.0) for 15min; Block endogenous peroxidase by 3% hydrogen peroxide for 20 minutes; Blocking buffer (normal goat serum) at 37°C for 30min; Antibody incubation with (Gamma-Adaptin) Polyclonal Antibody, Unconjugated (bs-1600R) at 1:400 overnight at 4°C, followed by operating according to SP Kit(Rabbit) (sp-0023) instructions and DAB staining.



Tissue/cell: rat brain tissue; 4% Paraformaldehyde-fixed and paraffin-embedded; Antigen retrieval: citrate buffer (0.01M, pH 6.0), Boiling bathing for 15min; Block endogenous peroxidase by 3% Hydrogen peroxide for 30min; Blocking buffer (normal goat serum, C-0005) at 37°C for 20 min; Incubation: Anti-Gamma-Adaptin Polyclonal Antibody, Unconjugated(bs-1600R) 1:200, overnight at 4°C, followed by conjugation to the secondary antibody(SP-0023) and DAB(C-0010) staining



Cell culture(MCF7); Paraformaldehyde-fixed; Incubated by 0.3% Triton-100 for 20 min; Blocking buffer (normal goat serum) at 37°C for 30min; Antibody incubation with (Gamma-



Cell culture(SW480); Paraformaldehyde-fixed; Incubated by 0.3% Triton-100 for 20 min; Blocking buffer (normal goat serum) at 37°C for 30min; Antibody incubation with (Gamma-

Important Note: This product as supplied is intended for research use only, not for use in human, therapeutic or diagnostic applications.

Adaptin) Polyclonal Antibody, Unconjugated (bs-1600R) at 1:200 overnight at 4°C, followed by a conjugated secondary antibody (bs-0295G-FITC) for 90 minutes and DAPI staining.

Adaptin) Polyclonal Antibody, Unconjugated (bs-1600R) at 1:200 overnight at 4°C, followed by a conjugated secondary antibody (bs-0295G-FITC) for 90 minutes and DAPI staining.