

**bs-10462R****[ Primary Antibody ]****Phospho-ITGB2 (Thr758) Rabbit pAb****Bioss**  
**ANTIBODIES**

www.bioss.com.cn

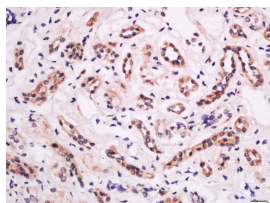
sales@bioss.com.cn

techsupport@bioss.com.cn

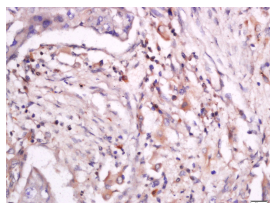
400-901-9800

**— DATASHEET —**

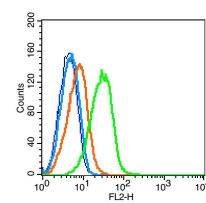
<b>Host:</b> Rabbit	<b>Isotype:</b> IgG	<b>Applications:</b> IHC-P (1:100-500) <b>IHC-F</b> (1:100-500) <b>IF</b> (1:100-500) <b>Flow-Cyt</b> (1µg/Test)
<b>Clonality:</b> Polyclonal		
<b>GeneID:</b> 3689	<b>SWISS:</b> P05107	
<b>Target:</b> Phospho-ITGB2 (Thr758)		
<b>Immunogen:</b> KLH conjugated synthesised phosphopeptide derived from human CD18 around the phosphorylation site of Thr758: SA(p-T)TT.		
<b>Purification:</b> affinity purified by Protein A		<b>Reactivity:</b> Human (predicted: Mouse, Rat, Rabbit, Pig, Sheep, Cow, Chicken, Dog, GuineaPig, Horse)
<b>Concentration:</b> 1mg/ml		
<b>Storage:</b> 0.01M TBS (pH7.4) with 1% BSA, 0.02% Proclin300 and 50% Glycerol. Shipped at 4°C. Store at -20°C for one year. Avoid repeated freeze/thaw cycles.		
<b>Background:</b> The product of this gene belongs to the integrin beta chain family of proteins. Integrins are integral cell-surface proteins composed of an alpha chain and a beta chain. This gene encodes the integrin beta chain beta 2. A given chain may combine with multiple partners resulting in different integrins. For example, beta 2 combines with the alpha L chain to form the integrin LFA-1, and combines with the alpha M chain to form the integrin Mac-1. Integrins are known to participate in cell adhesion as well as cell-surface mediated signalling. Defects in this gene are the cause of leukocyte adhesion deficiency type I (LAD1). Two transcript variants encoding the same protein have been identified for this gene. [provided by RefSeq, Jul 2008].		
		<b>Predicted MW.:</b> 82 kDa
		<b>Subcellular Location:</b> Cell membrane

**— VALIDATION IMAGES —**

Tissue/cell: human kidney tissue; 4% Paraformaldehyde-fixed and paraffin-embedded; Antigen retrieval: citrate buffer (0.01M, pH 6.0), Boiling bathing for 15min; Block endogenous peroxidase by 3% Hydrogen peroxide for 30min; Blocking buffer (normal goat serum, C-0005) at 37°C for 20 min; Incubation: Anti-Phospho-CD18 (Thr758) Polyclonal Antibody, Unconjugated(bs-10462R) 1:200, overnight at 4°C, followed by conjugation to the secondary antibody(SP-0023) and DAB(C-0010) staining



Tissue/cell: human lung carcinoma; 4% Paraformaldehyde-fixed and paraffin-embedded; Antigen retrieval: citrate buffer (0.01M, pH 6.0), Boiling bathing for 15min; Block endogenous peroxidase by 3% Hydrogen peroxide for 30min; Blocking buffer (normal goat serum, C-0005) at 37°C for 20 min; Incubation: Anti-Phospho-CD18 (Thr758) Polyclonal Antibody, Unconjugated(bs-10462R) 1:200, overnight at 4°C, followed by conjugation to the secondary antibody(SP-0023) and DAB(C-0010) staining



Blank control: Raji cells(blue). Primary Antibody: Rabbit Anti-Phospho-CD18 (Thr758) antibody(bs-10462R), Dilution: 1µg in 100 µL 1X PBS containing 0.5% BSA; Isotype Control Antibody: Rabbit IgG (orange), used under the same conditions. Secondary Antibody: Goat anti-rabbit IgG-PE(white blue), Dilution: 1:200 in 1 X PBS containing 0.5% BSA.