

bsm-52935R**[Primary Antibody]**

www.bioss.com.cn

sales@bioss.com.cn

techsupport@bioss.com.cn

400-901-9800

ADAM10 Recombinant Rabbit mAb**— DATASHEET —****Host:** Rabbit**Isotype:** IgG**Clonality:** Recombinant**CloneNo.:** 4C3**GeneID:** 102**SWISS:** Q14672**Target:** ADAM10**Immunogen:** A synthesized peptide derived from human ADAM 10: 700-748/748.**Purification:** affinity purified by Protein A**Concentration:** 1mg/ml

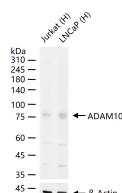
Storage: 1*TBS (pH7.4), 0.05% BSA, 40% Glycerol. Preservative: 0.02% Proclin300.
Shipped at 4°C. Store at -20°C for one year. Avoid repeated freeze/thaw cycles.

Background: Members of the ADAM family are cell surface proteins with a unique structure possessing both potential adhesion and protease domains. This gene encodes and ADAM family member that cleaves many proteins including TNF-alpha and E-cadherin. Alternate splicing results in multiple transcript variants encoding different proteins that may undergo similar processing.
[provided by RefSeq, Feb 2016]

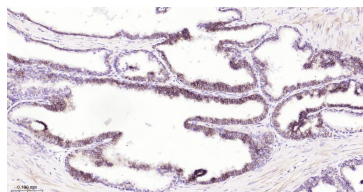
Applications: WB (1:500-2000)**IHC-P** (1:50-200)**IHC-F** (1:50-200)**IF** (1:50-200)**IP** (1:20-50)**Reactivity:** Human

Predicted
MW.: 84 kDa

Subcellular
Location: Cell membrane ,Cytoplasm

— VALIDATION IMAGES —

25 ug total protein per lane of various lysates (see on figure) probed with ADAM10 monoclonal antibody, unconjugated (bsm-52935R) at 1:1000 dilution and 4°C overnight incubation. Followed by conjugated secondary antibody incubation at r.t. for 60 min.



Paraformaldehyde-fixed, paraffin embedded Human Prostate Cancer; Antigen retrieval by boiling in sodium citrate buffer (pH6.0) for 15 min; Antibody incubation with ADAM10 Monoclonal Antibody, Unconjugated (bsm-52935R) at 1:200 overnight at 4°C, followed by conjugation to the bs-0295G-HRP and DAB (C-0010) staining.