

---

## TCF7L1 Rabbit pAb

Catalog Number: bs-12891R

Target Protein: TCF7L1

Concentration: 1mg/ml

Form: Liquid

Host: Rabbit

Clonality: Polyclonal

Isotype: IgG

Applications: IHC-P (1:100-500), IHC-F (1:100-500), IF (1:100-500)

Reactivity: Human (predicted:Mouse, Rat, Cow, Dog)

Predicted MW: 63 kDa

Entrez Gene: 83439

Swiss Prot: Q9HCS4

Source: KLH conjugated synthetic peptide derived from human TCF7L1: 51-150/588.

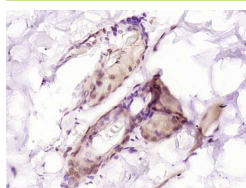
Purification: affinity purified by Protein A

Storage: 0.01M TBS (pH7.4) with 1% BSA, 0.02% Proclin300 and 50% Glycerol.

Shipped at 4°C. Store at -20°C for one year. Avoid repeated freeze/thaw cycles.

**Background:** This gene encodes a member of the T cell factor/lymphoid enhancer factor family of transcription factors. These transcription factors are activated by beta catenin, mediate the Wnt signaling pathway and are antagonized by the transforming growth factor beta signaling pathway. The encoded protein contains a high mobility group-box DNA binding domain and participates in the regulation of cell cycle genes and cellular senescence.  
[provided by RefSeq, Nov 2010]

### VALIDATION IMAGES



Paraformaldehyde-fixed, paraffin embedded (Human skin); Antigen retrieval by boiling in sodium citrate buffer (pH6.0) for 15min; Block endogenous peroxidase by 3% hydrogen peroxide for 20 minutes; Blocking buffer (normal goat serum) at 37°C for 30min; Antibody incubation with (TCF7L1) Polyclonal Antibody, Unconjugated (bs-12891R) at 1:500 overnight at 4°C, followed by a conjugated secondary (sp-0023) for 20 minutes and DAB staining.