

---

## phospho-P53 (Ser46) Rabbit pAb

Catalog Number: bs-3707R

Target Protein: phospho-P53 (Ser46)

Concentration: 1mg/ml

Form: Liquid

Host: Rabbit

Clonality: Polyclonal

Isotype: IgG

Applications: WB (1:500-2000), IHC-P (1:100-500), IHC-F (1:100-500), IF (1:100-500), Flow-Cyt (0.2µg /test), ICC/IF (1:100)

Reactivity: Human, Mouse

Predicted MW: 43 kDa

Entrez Gene: 7157

Swiss Prot: P04637

Source: KLH conjugated Synthesised phosphopeptide derived from human P53 around the phosphorylation site of Ser46: ML(p-S)PD.

Purification: affinity purified by Protein A

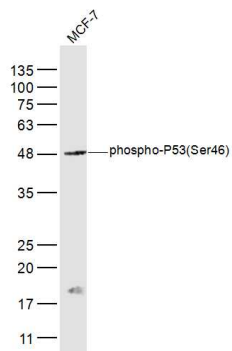
Storage: 0.01M TBS (pH7.4) with 1% BSA, 0.02% Proclin300 and 50% Glycerol.

Shipped at 4°C. Store at -20°C for one year. Avoid repeated freeze/thaw cycles.

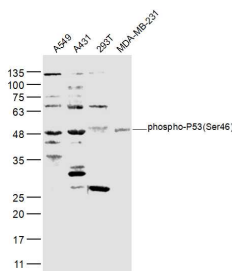
**Background:** This gene encodes a tumor suppressor protein containing transcriptional activation, DNA binding, and oligomerization domains. The encoded protein responds to diverse cellular stresses to regulate expression of target genes, thereby inducing cell cycle arrest, apoptosis, senescence, DNA repair, or changes in metabolism. Mutations in this gene are associated with a variety of human cancers, including hereditary cancers such as Li-Fraumeni syndrome. Alternative splicing of this gene and the use of alternate promoters result in multiple transcript variants and isoforms. Additional isoforms have also been shown to result from the use of alternate translation initiation codons (PMIDs: 12032546, 20937277). [provided by RefSeq, Feb 2013].

### VALIDATION IMAGES

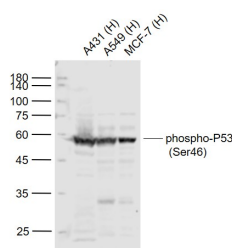
---



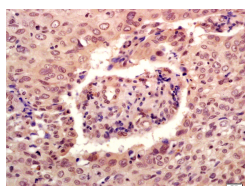
Sample: MCF-7(Human) Cell Lysate at 30 ug Primary: Anti- phospho-P53(Ser46) (bs-3707R) at 1/300 dilution  
Secondary: IRDye800CW Goat Anti-Rabbit IgG at 1/20000 dilution Predicted band size: 43 kD Observed band size: 48 kD



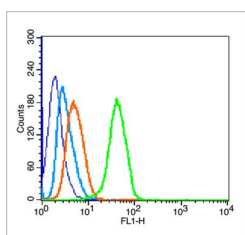
Sample: A549(Human) Cell Lysate at 30 ug A431(Human) Cell Lysate at 30 ug 293T(Human) Cell Lysate at 30 ug MDA-MB-231(Human) Cell Lysate at 30 ug Primary: Anti- phospho-P53(Ser46) (bs-3707R) at 1/300 dilution  
Secondary: IRDye800CW Goat Anti-Rabbit IgG at 1/20000 dilution Predicted band size: 43 kD Observed band size: 48 kD



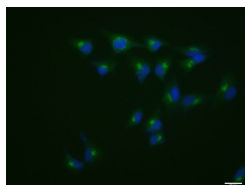
Sample: Lane 1: A431 (Human) Cell Lysate at 30 ug Lane 2: A549 (Human) Cell Lysate at 30 ug Lane 3: MCF-7 (Human) Cell Lysate at 30 ug Primary: Anti-phospho-P53 (Ser46) (bs-3707R) at 1/1000 dilution Secondary: IRDye800CW Goat Anti-Rabbit IgG at 1/20000 dilution Predicted band size: 53 kD Observed band size: 55 kD



Tissue/cell: human laryngocarcinoma; 4% Paraformaldehyde-fixed and paraffin-embedded; Antigen retrieval: citrate buffer ( 0.01M, pH 6.0 ), Boiling bathing for 15min; Block endogenous peroxidase by 3% Hydrogen peroxide for 30min; Blocking buffer (normal goat serum,C-0005) at 37°C for 20 min; Incubation: Anti-phospho-P53(Ser46) Polyclonal Antibody, Unconjugated(bs-3707R) 1:200, overnight at 4°C, followed by conjugation to the secondary antibody(SP-0023) and DAB(C-0010) staining



Blank control (blue line):Hela(fixed with 70% ethanol (Overnight at 4°C) and then permeabilized with 90% ice-cold methanol for 30 min on ice). Primary Antibody (green line): Rabbit Anti-phospho-P53(Ser46) antibody (bs-3707R), Dilution: 0.2µg /10<sup>6</sup> cells; Isotype Control Antibody (orange line): Rabbit IgG . Secondary Antibody (white blue line): Goat anti-rabbit IgG-FITC, Dilution: 1µg /test.



A549 cell; 4% Paraformaldehyde-fixed; Triton X-100 at room temperature for 20 min; Blocking buffer (normal goat serum, C-0005) at 37°C for 20 min; Antibody incubation with (phospho-P53 (Ser46)) polyclonal Antibody, Unconjugated (bs-3707R) 1:100, 90 minutes at 37°C; followed by a conjugated Goat Anti-Rabbit IgG antibody at 37°C for 90 minutes, DAPI (blue, C02-04002) was used to stain the cell nuclei.