

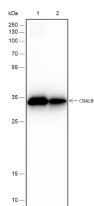
bsm-60602R**[Primary Antibody]****Bioss**
ANTIBODIES

www.bioss.com.cn

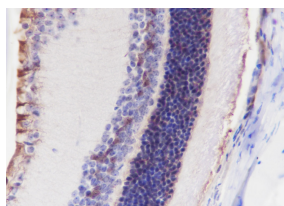
sales@bioss.com.cn

techsupport@bioss.com.cn

400-901-9800

CRALBP Recombinant Rabbit mAb**— DATASHEET —****Host:** Rabbit**Isotype:** IgG**Clonality:** Recombinant**CloneNo.:** F6F8**Target:** CRALBP**Purification:** affinity purified by Protein A**Concentration:** 1mg/ml**Storage:** 0.01M TBS (pH7.4) with 1% BSA, 0.02% Proclin300 and 50% Glycerol.
Shipped at 4°C. Store at -20°C for one year. Avoid repeated freeze/thaw cycles.**Background:** The protein encoded by this gene is a 36-kD water-soluble protein which carries 11-cis-retinaldehyde or 11-cis-retinal as physiologic ligands. It may be a functional component of the visual cycle. Mutations of this gene have been associated with severe rod-cone dystrophy, Bothnia dystrophy (nonsyndromic autosomal recessive retinitis pigmentosa) and retinitis punctata albescens. [provided by RefSeq, Jul 2008]**Applications:** **WB** (1:500-1000)
IHC-P (1:100-500)
IHC-F (1:100-500)
IF (1:100-500)**Reactivity:** Mouse (predicted: Rat)**Subcellular Location:** Cytoplasm**— VALIDATION IMAGES —**

Blocking buffer: 5% NFDM/TBST Primary ab
dilution: 1:1000 Primary ab incubation
condition: 2 hours at room temperature
Secondary ab: Goat Anti-Rabbit IgG H&L (HRP)
Lysate: 1: Mouse eye, 2: Rat eye Protein loading
quantity: 20 µg Exposure time: 60 s Predicted
MW: 36 kDa Observed MW: 36 kDa



Tissue: Mouse retina Section type: Formalin fixed
& Paraffin -embedded section Retrieval method:
High temperature and high pressure Retrieval
buffer: Tris/EDTA buffer, pH 9.0 Primary ab
dilution: 1:1000 Primary ab incubation
condition: 1 hour at room temperature
Secondary ab: SP Kit(Rabbit) (sp-0023) Counter
stain: Hematoxylin (Blue) Comment: Color
brown is the positive signal for bsm-60602R