

**bsm-60529R****[ Primary Antibody ]****Bioss**  
**ANTIBODIES**

www.bioss.com.cn

sales@bioss.com.cn

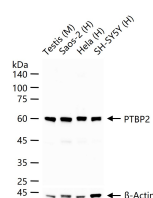
techsupport@bioss.com.cn

400-901-9800

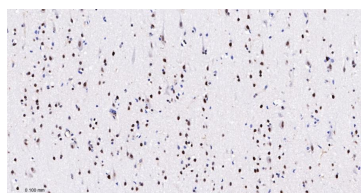
**PTBP2 Recombinant Rabbit mAb****— DATASHEET —****Host:** Rabbit**Isotype:** IgG/Kappa**Clonality:** Recombinant**CloneNo.:** C12F1**Target:** PTBP2**Purification:** affinity purified by Protein A**Concentration:** 1mg/ml**Storage:** 0.01M TBS (pH7.4) with 1% BSA, 0.02% Proclin300 and 50% Glycerol.

Shipped at 4°C. Store at -20°C for one year. Avoid repeated freeze/thaw cycles.

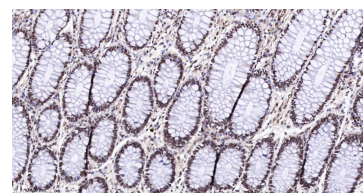
**Background:** PTBP-2 is a member of the polypyrimidine tract binding family of proteins. Predominantly expressed in brain, but also found in heart and skeletal muscle, PTBP-2 localizes to the nucleus and contains four RRM (RNA recognition motif) domains. PTBP-2 functions as an RNA-binding protein associated in a complex that is involved in the regulation of exon splicing and the stabilization of mRNAs in the cytoplasm. Six isoforms exist for PTBP-2 due to alternative splicing events. Isoforms 1 and 2 (also known as nPTB1 and nPTB2/PTBPLP-L, respectively) are neuronal-specific. Isoforms 3 and 4 (also known as nPTB3/PTBPLP-L and nPTB4, respectively) are found in non-neuronal tissues, as are isoforms 5 and 6 (also known as nPTB5/nPTB7/PTBPLP-S and nPTB6/nPTB8/PTBPLP-S, respectively). The existence of various isoforms may function to modulate the RNA-binding properties of PTBP-2

**Applications:** **WB** (1:500-2000)**IHC-P** (1:100-500)**IHC-F** (1:100-500)**IF** (1:100-500)**Reactivity:** Human, Mouse, Rat**Subcellular Location:** Nucleus**— VALIDATION IMAGES —**

25 ug total protein per lane of various lysates (see on figure) probed with PTBP2 monoclonal antibody, unconjugated (bsm-60529R) at 1:1000 dilution and 4°C overnight incubation. Followed by conjugated secondary antibody incubation at r.t. for 60 min.



Paraformaldehyde-fixed, paraffin embedded Human Cerebrum; Antigen retrieval by boiling in sodium citrate buffer (pH6.0) for 15 min; The section was incubated with PTBP2 Monoclonal Antibody, Unconjugated (bsm-60529R) at 1:200 overnight at 4°C, followed by conjugation to the bs-0295G-HRP and DAB (C-0010) staining.



Paraformaldehyde-fixed, paraffin embedded Human Colon; Antigen retrieval by boiling in sodium citrate buffer (pH6.0) for 15 min; The section was incubated with PTBP2 Monoclonal Antibody, Unconjugated (bsm-60529R) at 1:200 overnight at 4°C, followed by conjugation to the bs-0295G-HRP and DAB (C-0010) staining.