

**bsm-60576R****[ Primary Antibody ]****LHB Recombinant Rabbit mAb****BioSS**  
**ANTIBODIES**

www.bioss.com.cn

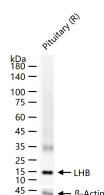
sales@bioss.com.cn

techsupport@bioss.com.cn

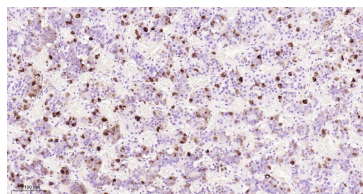
400-901-9800

**— DATASHEET —****Host:** Rabbit**Isotype:** IgG**Clonality:** Recombinant**CloneNo.:** E5C7**Target:** LHB**Purification:** affinity purified by Protein A**Concentration:** 1mg/ml**Storage:** 0.01M TBS (pH7.4) with 1% BSA, 0.02% Proclin300 and 50% Glycerol.

Shipped at 4°C. Store at -20°C for one year. Avoid repeated freeze/thaw cycles.

**Background:** Luteinizing Hormone is a member of the glycoprotein hormone family. Glycoprotein hormones are heterodimers consisting of a common alpha subunit and an unique beta subunit which confers biological specificity. LH is expressed in the pituitary gland and promotes spermatogenesis and ovulation by stimulating the testes and ovaries to synthesize steroids. Mutations in the Luteinizing Hormone (LHB) gene are associated with hypogonadism which is characterized by infertility and pseudohermaphroditism.**Applications:** WB (1:500-2000)**IHC-P** (1:100-500)**IHC-F** (1:100-500)**IF** (1:100-500)**Reactivity:** Human, Rat  
(predicted: Mouse)**Predicted  
MW.:** 16 kDa**Subcellular  
Location:** Secreted**— VALIDATION IMAGES —**

25 ug total protein per lane of various lysates (see on figure) probed with LHB monoclonal antibody, unconjugated (bsm-60576R) at 1:1000 dilution and 4°C overnight incubation. Followed by conjugated secondary antibody incubation at r.t. for 60 min.



Paraformaldehyde-fixed, paraffin embedded Human pituitary gland; Antigen retrieval by boiling in sodium citrate buffer (pH6.0) for 15 min; Antibody incubation with LHB Monoclonal Antibody, Unconjugated(bsm-60576R) at 1:200 overnight at 4°C, followed by conjugation to the bs-0295G-HRP and DAB (C-0010) staining.