

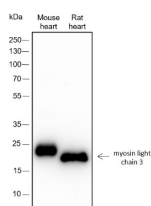
**bsm-60346R****[ Primary Antibody ]****myosin light chain 3 Recombinant Rabbit mAb****Bioss**  
**ANTIBODIES**

www.bioss.com.cn

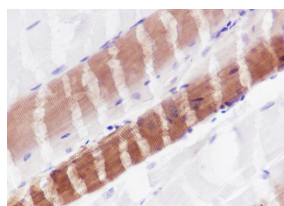
sales@bioss.com.cn

techsupport@bioss.com.cn

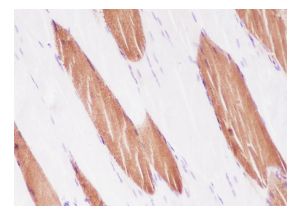
400-901-9800

**— DATASHEET —****Host:** Rabbit**Clonality:** Recombinant**Target:** myosin light chain 3**Purification:** affinity purified by Protein A**Concentration:** 1mg/ml**Storage:** 0.01M TBS (pH7.4) with 1% BSA, 0.02% Proclin300 and 50% Glycerol.  
Shipped at 4°C. Store at -20°C for one year. Avoid repeated freeze/thaw cycles.**Background:** Myosin is the major component of thick muscle filaments, and is a long asymmetric molecule containing a globular head and a long tail. The molecule consists of two heavy chains each ~200,000 daltons, and four light chains each ~16,000 - 21,000 daltons. Activation of smooth and cardiac muscle primarily involves pathways which increase calcium and myosin phosphorylation resulting in contraction. Myosin light chain phosphatase acts to regulate muscle contraction by dephosphorylating activated myosin light chain. Human myosin light chain has clinical application as a cardiac marker.**Isotype:** IgG**CloneNo.:** F12A11**Applications:** WB (1:500-2000)**IHC-P** (1:100-500)**IHC-F** (1:100-500)**IF** (1:100-500)**Flow-Cyt** (1:50-100)**Reactivity:** Human, Mouse, Rat**Subcellular Location:** Cytoplasm**— VALIDATION IMAGES —**

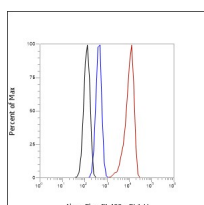
Blocking buffer: 5% NFDM/TBST Primary ab dilution: 1:2000 Primary ab incubation condition: 2 hours at room temperature  
Secondary ab: Goat Anti-Rabbit IgG H&L (HRP)  
Lysate: Mouse heart, Rat heart Protein loading quantity: 20 µg Exposure time: 10 s Predicted MW: 22 kDa Observed MW: 22 kDa



Tissue: Rat skeletal muscle Section type: Formalin fixed & Paraffin -embedded section  
Retrieval method: High temperature and high pressure Retrieval buffer: Tris/EDTA buffer, pH 9.0 Primary ab dilution: 1:1000 Primary ab incubation condition: 1 hour at room temperature Secondary ab: SP Kit(Rabbit) (sp-0023) Counter stain: Hematoxylin (Blue)  
Comment: Color brown is the positive signal for bsm-60346R



Tissue: Human skeletal muscle Section type: Formalin fixed & Paraffin -embedded section  
Retrieval method: High temperature and high pressure Retrieval buffer: Tris/EDTA buffer, pH 9.0 Primary ab dilution: 1:1000 Primary ab incubation condition: 1 hour at room temperature Secondary ab: SP Kit(Rabbit) (sp-0023) Counter stain: Hematoxylin (Blue)  
Comment: Color brown is the positive signal for bsm-60346R



Cell line: U-2 OS Fixative: 4% Paraformaldehyde  
Permeabilization: 90% methanol Primary ab dilution: 1:100 Secondary ab: Goat anti Rabbit IgG Unlabelled control: The cell without incubation with primary antibody and secondary antibody (Black line). Isotype control: Rabbit monoclonal IgG (Blue line). Comment: Line red is the positive signal for bsm-60346R

Important Note: This product as supplied is intended for research use only, not for use in human, therapeutic or diagnostic applications.