

## SLC14A1 Rabbit pAb

Catalog Number: bs-7639R

Target Protein: SLC14A1

Concentration: 1mg/ml

Form: Liquid

Host: Rabbit

Clonality: Polyclonal

Isotype: IgG

Applications: WB (1:500-2000)

Reactivity: Mouse (predicted:Human, Rat, Rabbit, Pig, Sheep, Cow, Chicken)

Predicted MW: 43 kDa

Entrez Gene: 6563

Swiss Prot: Q13336

Source: KLH conjugated synthetic peptide derived from human SLC14A1/RACH1: 151-250/389.

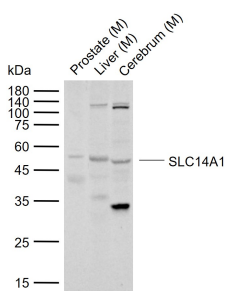
Purification: affinity purified by Protein A

Storage: 0.01M TBS (pH7.4) with 1% BSA, 0.02% Proclin300 and 50% Glycerol.

Shipped at 4°C. Store at -20°C for one year. Avoid repeated freeze/thaw cycles.

**Background:** SLC14A1 is one of two major mammalian urea transporters, which play a critical role in the urine-concentrating mechanism. Their abundance is regulated by vasopressin, glucocorticoids, and mineralocorticoids. These regulatory mechanisms may be important in disease states such as diabetes.

### VALIDATION IMAGES



Sample: Lane 1: Mouse Prostate tissue lysates Lane 2: Mouse Liver tissue lysates Lane 3: Mouse Cerebrum tissue lysates Primary: Anti-SLC14A1 (bs-7639R) at 1/1000 dilution Secondary: IRDye800CW Goat Anti-Rabbit IgG at 1/20000 dilution Predicted band size: 43 kDa Observed band size: 48 kDa