

bs-7638R

[Primary Antibody]

RHCG Rabbit pAb

Bioss
ANTIBODIES

www.bioss.com.cn

sales@bioss.com.cn

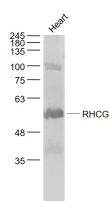
techsupport@bioss.com.cn

400-901-9800

— DATASHEET —

Host: Rabbit	Isotype: IgG	Applications: WB (1:500-2000)
Clonality: Polyclonal		Reactivity: Mouse (predicted: Human, Rat, Rabbit, Pig, Sheep, Cow, Dog, Horse)
GeneID: 51458	SWISS: Q9UBD6	
Target: RHCG		Predicted MW.: 53 kDa
Immunogen: KLH conjugated synthetic peptide derived from human RHCG: 50-150/479. < Extracellular >		Subcellular Location: Cell membrane
Purification: affinity purified by Protein A		
Concentration: 1mg/ml		
Storage: 0.01M TBS (pH7.4) with 1% BSA, 0.02% Proclin300 and 50% Glycerol. Shipped at 4°C. Store at -20°C for one year. Avoid repeated freeze/thaw cycles.		
Background: Functions as an electroneutral and bidirectional ammonium transporter. May regulate transepithelial ammonia secretion.		

— VALIDATION IMAGES —



Sample: Heart (Mouse) Lysate at 40 ug Primary:
Anti- RHCG (bs-7638R) at 1/1000 dilution
Secondary: IRDye800CW Goat Anti-Rabbit IgG at
1/20000 dilution Predicted band size: 53 kD
Observed band size: 53 kD