

bs-20724R**[Primary Antibody]****SLC22A11 Rabbit pAb****BioSS**
ANTIBODIES

www.bioss.com.cn

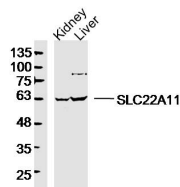
sales@bioss.com.cn

techsupport@bioss.com.cn

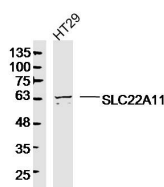
400-901-9800

— DATASHEET —

Host: Rabbit	Isotype: IgG	Applications: WB (1:500-2000)
Clonality: Polyclonal		Reactivity: Human, Mouse
GeneID: 55867	SWISS: Q9NSA0	
Target: SLC22A11		
Immunogen: KLH conjugated synthetic peptide derived from human SLC22A11: 481-550/550. < Cytoplasmic >		Predicted MW.: 60 kDa
Purification: affinity purified by Protein A		Subcellular Location: Cell membrane
Concentration: 1mg/ml		
Storage: 0.01M TBS (pH7.4) with 1% BSA, 0.02% Proclin300 and 50% Glycerol. Shipped at 4°C. Store at -20°C for one year. Avoid repeated freeze/thaw cycles.		
Background: The protein encoded by this gene is involved in the sodium-independent transport and excretion of organic anions, some of which are potentially toxic. The encoded protein is an integral membrane protein and is found mainly in the kidney and in the placenta, where it may act to prevent potentially harmful organic anions from reaching the fetus. Alternative splicing results in multiple transcript variants. [provided by RefSeq, Apr 2015]		

— VALIDATION IMAGES —

Sample: Kidney (Mouse) Lysate at 40 ug Liver (Mouse) Lysate at 40 ug Primary: Anti-SLC22A11 (bs-20724R) at 1/300 dilution Secondary: IRDye800CW Goat Anti-Rabbit IgG at 1/20000 dilution Predicted band size: 60 kD Observed band size: 63 kD



Sample: HT29(human) Cell Lysate at 40 ug Primary: Anti-SLC22A11 (bs-20724R) at 1/300 dilution Secondary: IRDye800CW Goat Anti-Rabbit IgG at 1/20000 dilution Predicted band size: 60 kD Observed band size: 63 kD