

bs-0571R**[Primary Antibody]****CCNA2 Rabbit pAb****BioSS**
ANTIBODIES

www.bioss.com.cn

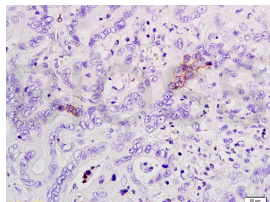
sales@bioss.com.cn

techsupport@bioss.com.cn

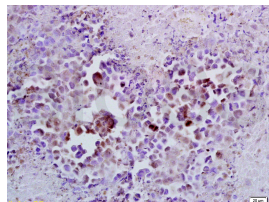
400-901-9800

— DATASHEET —

Host: Rabbit	Isotype: IgG	Applications: IHC-P (1:100-500) IHC-F (1:100-500) IF (1:100-500)
Clonality: Polyclonal		
GeneID: 890	SWISS: P20248	
Target: CCNA2		Reactivity: Human, Mouse (predicted: Rat)
Immunogen: KLH conjugated synthetic peptide derived from human CCNA2: 375-431/431.		
Purification: affinity purified by Protein A		Predicted MW.: 49 kDa
Concentration: 1mg/ml		Subcellular Location: Cytoplasm
Storage: 0.01M TBS (pH7.4) with 1% BSA, 0.02% Proclin300 and 50% Glycerol. Shipped at 4°C. Store at -20°C for one year. Avoid repeated freeze/thaw cycles.		
Background: The protein encoded by this gene belongs to the highly conserved cyclin family, whose members function as regulators of the cell cycle. This protein binds and activates cyclin-dependent kinase 2 and thus promotes transition through G1/S and G2/M. [provided by RefSeq, Aug 2016]		

— VALIDATION IMAGES —

Tissue/cell: human bile duct cancer; 4% Paraformaldehyde-fixed and paraffin-embedded; Antigen retrieval: citrate buffer (0.01M, pH 6.0), Boiling bathing for 15min; Block endogenous peroxidase by 3% Hydrogen peroxide for 30min; Blocking buffer (normal goat serum, C-0005) at 37°C for 20 min; Incubation: Anti-Cyclin A2 Polyclonal Antibody, Unconjugated(bs-0571R) 1:200, overnight at 4°C, followed by conjugation to the secondary antibody(SP-0023) and DAB(C-0010) staining



Tissue/cell: mouse lymphoma tissue; 4% Paraformaldehyde-fixed and paraffin-embedded; Antigen retrieval: citrate buffer (0.01M, pH 6.0), Boiling bathing for 15min; Block endogenous peroxidase by 3% Hydrogen peroxide for 30min; Blocking buffer (normal goat serum, C-0005) at 37°C for 20 min; Incubation: Anti-Cyclin A2 Polyclonal Antibody, Unconjugated(bs-0571R) 1:100, overnight at 4°C, followed by conjugation to the secondary antibody(SP-0023) and DAB(C-0010) staining

— SELECTED CITATIONS —

- **[IF=8.74]** Chen et al. STAT1 inhibits human hepatocellular carcinoma cell growth through induction of p53 and Fbxw7. (2015) Cancer.Cell.Int. 15:111 WB ;Human. 26617467
- **[IF=5.31]** Meiju Zhang. et al. The role of E2A in ATPR-induced cell differentiation and cycle arrest in acute myeloid leukaemia cells. J Cell Mol Med. 2022 Feb;26(4):1128-1143 IHC ;Mouse. 35001521
- **[IF=2.08]** Zhang, Jihong, et al. "Interleukin 18 augments growth ability via NF-κB and p38/ATF2 pathways by targeting cyclin B1, cyclin B2, cyclin A2, and Bcl-2 in BRL-3A rat liver cells." Gene (2015). WB ;Rat. 25752290
- **[IF=2.41]** Chang et al. Analysis of the ways and methods of signaling pathways in regulating cell cycle of NIH3T3 at

Important Note: This product as supplied is intended for research use only, not for use in human, therapeutic or diagnostic applications.

transcriptional level. (2015) BMC.Cell.Biol. 16:25 WB ;Mouse. 26511608