

**bs-0084R****[ Primary Antibody ]****Bioss**  
**ANTIBODIES**

www.bioss.com.cn

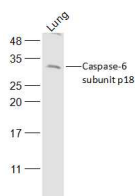
sales@bioss.com.cn

techsupport@bioss.com.cn

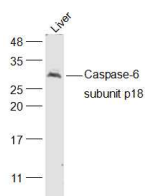
400-901-9800

**Caspase-6 subunit p18 Rabbit pAb****— DATASHEET —**

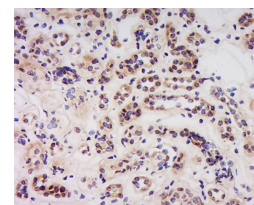
<b>Host:</b> Rabbit	<b>Isotype:</b> IgG
<b>Clonality:</b> Polyclonal	
<b>GeneID:</b> 839	<b>SWISS:</b> P55212
<b>Target:</b> Caspase-6 subunit p18	
<b>Immunogen:</b> KLH conjugated synthetic peptide derived from human Caspase-6 subunit p18: 27-130/293.	
<b>Purification:</b> affinity purified by Protein A	
<b>Concentration:</b> 1mg/ml	
<b>Storage:</b> 0.01M TBS (pH7.4) with 1% BSA, 0.02% Proclin300 and 50% Glycerol. Shipped at 4°C. Store at -20°C for one year. Avoid repeated freeze/thaw cycles.	
<b>Background:</b> This gene encodes a protein which is a member of the cysteine-aspartic acid protease (caspase) family. Sequential activation of caspases plays a central role in the execution-phase of cell apoptosis. Caspases exist as inactive proenzymes which undergo proteolytic processing at conserved aspartic residues to produce two subunits, large and small, that dimerize to form the active enzyme. This protein is processed by caspases 7, 8 and 10, and is thought to function as a downstream enzyme in the caspase activation cascade. Alternative splicing of this gene results in two transcript variants that encode different isoforms. [provided by RefSeq, Jul 2008]	

**Applications:** **WB** (1:500-2000)**IHC-P** (1:100-500)**IHC-F** (1:100-500)**IF** (1:100-500)**Reactivity:** Human, Mouse  
(predicted: Rat, Rabbit, Dog)**Predicted MW.:** 18/33 kDa**Subcellular Location:** Cytoplasm ,Nucleus**— VALIDATION IMAGES —**

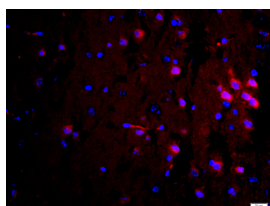
Sample: Lung (Mouse) Lysate at 40 ug Primary: Anti-Caspase-6 subunit p18 (bs-0084R) at 1/500 dilution Secondary: IRDye800CW Goat Anti-Rabbit IgG at 1/20000 dilution Predicted band size: 18/33 kD Observed band size: 33 kD



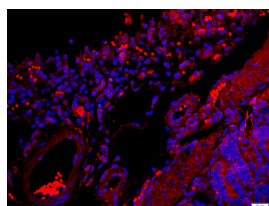
Sample: Liver (Mouse) Lysate at 40 ug Primary: Anti-Caspase-6 subunit p18 (bs-0084R) at 1/500 dilution Secondary: IRDye800CW Goat Anti-Rabbit IgG at 1/20000 dilution Predicted band size: 18/33 kD Observed band size: 33 kD



Tissue/cell: Human kidney tissue; 4% Paraformaldehyde-fixed and paraffin-embedded; Antigen retrieval: citrate buffer (0.01M, pH 6.0), Boiling bathing for 15min; Block endogenous peroxidase by 3% Hydrogen peroxide for 30min; Blocking buffer (normal goat serum, C-0005) at 37°C for 20 min; Incubation: Anti- Caspase-6 Polyclonal Antibody, Unconjugated(bs-0084R) 1:200, overnight at 4°C, followed by conjugation to the secondary antibody(SP-0023) and DAB(C-0010) staining



Tissue/cell: mouse brain tissue; 4% Paraformaldehyde-fixed and paraffin-embedded; Antigen retrieval: citrate buffer (



Tissue/cell: mouse intestine tissue; 4% Paraformaldehyde-fixed and paraffin-embedded; Antigen retrieval: citrate buffer (

**Important Note:** This product as supplied is intended for research use only, not for use in human, therapeutic or diagnostic applications.

0.01M, pH 6.0 ), Boiling bathing for 15min;  
Blocking buffer (normal goat serum,C-0005) at  
37°C for 20 min; Incubation: Anti-Caspase-6  
Polyclonal Antibody, Unconjugated(bs-0084R)  
1:200, overnight at 4°C; The secondary antibody  
was Goat Anti-Rabbit IgG, Cy3  
conjugated(bs-0295G-Cy3)used at 1:200 dilution  
for 40 minutes at 37°C. DAPI(5ug/ml,blue,C-0033)  
was used to stain the cell nuclei

0.01M, pH 6.0 ), Boiling bathing for 15min;  
Blocking buffer (normal goat serum,C-0005) at  
37°C for 20 min; Incubation: Anti-Caspase-6  
Polyclonal Antibody, Unconjugated(bs-0084R)  
1:200, overnight at 4°C; The secondary antibody  
was Goat Anti-Rabbit IgG, Cy3  
conjugated(bs-0295G-Cy3)used at 1:200 dilution  
for 40 minutes at 37°C. DAPI(5ug/ml,blue,C-0033)  
was used to stain the cell nuclei