

**bs-9243R****[ Primary Antibody ]****RNF20 Rabbit pAb****Bioss**  
**ANTIBODIES**

www.bioss.com.cn

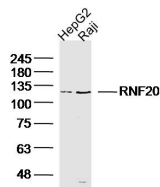
sales@bioss.com.cn

techsupport@bioss.com.cn

400-901-9800

**— DATASHEET —**

<b>Host:</b> Rabbit	<b>Isotype:</b> IgG	<b>Applications:</b> WB (1:500-2000)
<b>Clonality:</b> Polyclonal		<b>Reactivity:</b> Human (predicted: Mouse, Rat, Rabbit, Pig, Cow, Chicken, Dog, Horse)
<b>GeneID:</b> 56254	<b>SWISS:</b> Q5VTR2	
<b>Target:</b> RNF20		<b>Predicted MW.:</b> 114 kDa
<b>Immunogen:</b> KLH conjugated synthetic peptide derived from human RNF20: 551-660/975.		<b>Subcellular Location:</b> Nucleus
<b>Purification:</b> affinity purified by Protein A		
<b>Concentration:</b> 1mg/ml		
<b>Storage:</b> 0.01M TBS (pH7.4) with 1% BSA, 0.02% Proclin300 and 50% Glycerol. Shipped at 4°C. Store at -20°C for one year. Avoid repeated freeze/thaw cycles.		
<b>Background:</b> RNF20 is an E3 ubiquitin ligase protein that mediates monoubiquitination of histone H2B and the methylation of histone H3. It forms a ubiquitin ligase complex in cooperation with the E2 enzyme UBE2E1/UBCH6. It thereby plays a central role in histone code and gene regulation. It is required for transcriptional activation of Hox genes. It is recruited to the MDM2 promoter, probably by being recruited by p53/TP53, and thereby acts as a transcriptional coactivator.		

**— VALIDATION IMAGES —**

Sample: HepG2 Cell (Human) Lysate at 30 ug  
Cell (Human) Lysate at 30 ug Primary: Anti-RNF20 (bs-9243R) at 1/300 dilution Secondary: IRDye800CW Goat Anti-Rabbit IgG at 1/20000 dilution Predicted band size: 114kD Observed band size: 114kD