

**bs-20697R****[ Primary Antibody ]****IL-1R1 Rabbit pAb**

**Bioss**  
ANTIBODIES

www.bioss.com.cn

sales@bioss.com.cn

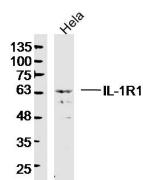
techsupport@bioss.com.cn

400-901-9800

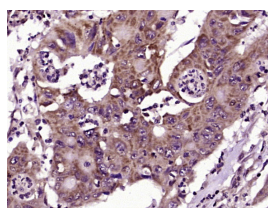
**— DATASHEET —****Host:** Rabbit**Isotype:** IgG**Clonality:** Polyclonal**GeneID:** 3554**SWISS:** P14778**Target:** IL-1R1**Immunogen:** KLH conjugated synthetic peptide derived from human IL-1R1: 41-140/569. < Extracellular >**Purification:** affinity purified by Protein A**Concentration:** 1mg/ml

**Storage:** 0.01M TBS (pH7.4) with 1% BSA, 0.02% Proclin300 and 50% Glycerol.  
Shipped at 4°C. Store at -20°C for one year. Avoid repeated freeze/thaw cycles.

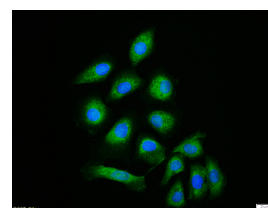
**Background:** The protein encoded by this gene is a cytokine receptor that belongs to the interleukin 1 receptor family. This protein is a receptor for interleukin alpha (IL1A), interleukin beta (IL1B), and interleukin 1 receptor, type I (IL1R1/IL1RA). It is an important mediator involved in many cytokine induced immune and inflammatory responses. This gene along with interleukin 1 receptor, type II (IL1R2), interleukin 1 receptor-like 2 (IL1RL2), and interleukin 1 receptor-like 1 (IL1RL1) form a cytokine receptor gene cluster in a region mapped to chromosome 2q12. [provided by RefSeq].

**Applications:** WB (1:500-2000)**IHC-P** (1:100-500)**IHC-F** (1:100-500)**IF** (1:100-500)**Flow-Cyt** (1µg /test)**ICC/IF** (1:100)**Reactivity:** Human (predicted: Mouse, Pig, Dog)**Predicted MW.:** 63 kDa**Subcellular Location:** Secreted ,Cell membrane**— VALIDATION IMAGES —**

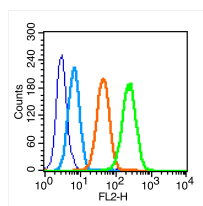
Sample: HeLa(human) Cell Lysate at 40 ug  
Primary: Anti-IL-1R1 (bs-20697R) at 1/300  
dilution Secondary: IRDye800CW Goat Anti-Rabbit IgG at 1/20000 dilution Predicted band size: 63 kD Observed band size: 63 kD



Paraformaldehyde-fixed, paraffin embedded (human colon carcinoma); Antigen retrieval by boiling in sodium citrate buffer (pH6.0) for 15min; Block endogenous peroxidase by 3% hydrogen peroxide for 20 minutes; Blocking buffer (normal goat serum) at 37°C for 30min; Antibody incubation with (IL-1R1) Polyclonal Antibody, Unconjugated (bs-20697R) at 1:400 overnight at 4°C, followed by operating according to SP Kit(Rabbit) (sp-0023) instructions and DAB staining.



HepG2 cell; 4% Paraformaldehyde-fixed; Triton X-100 at room temperature for 20 min; Blocking buffer (normal goat serum, C-0005) at 37°C for 20 min; Antibody incubation with (IL-1R1) polyclonal Antibody, Unconjugated (bs-20697R) 1:100, 90 minutes at 37°C; followed by a conjugated Goat Anti-Rabbit IgG antibody at 37°C for 90 minutes, DAPI (blue, C02-04002) was used to stain the cell nuclei.



Blank control (blue line): MCF7 (fixed with 70% methanol overnight at 4°C). Primary Antibody (green line): Rabbit Anti-IL-1R1 receptor antibody (bs-20697R), Dilution: 0.2µg /10<sup>6</sup> cells;

**Important Note:** This product as supplied is intended for research use only, not for use in human, therapeutic or diagnostic applications.

Isotype Control Antibody (orange line): Rabbit  
IgG . Secondary Antibody (white blue line): Goat  
anti-rabbit IgG-PE,Dilution: 1µg /test.

---

## — SELECTED CITATIONS —

- **[IF=5.1]** Qi Zheng. et al. M1-Type Microglia-Derived Extracellular Vesicles Overexpressing IL-1R1 Promote Postoperative Cognitive Dysfunction by Regulating Neuronal Inflammation. INFLAMMATION. 2023 Jul;;1-16 WB ;Mouse. 37505422
- **[IF=0]** Wei Wang. et al. Unveiling the impact of C15orf48 on non-small cell lung cancer through NF-kappa B signaling. Biomolecules and Biomedicine. 2024 Nov;; WB ;Human. 39576886
- **[IF=0]** Wei Wang. et al.Unveiling the impact of C15orf48 on non-small cell lung cancer through NF-kappa B signaling.BIOMOLECULES AND BIOMEDICINE.2024 Nov 22. Western blot ;Human. 39576886