

bs-20698R**[Primary Antibody]****IL-1R1 Rabbit pAb****BioSS**
ANTIBODIES

www.bioss.com.cn

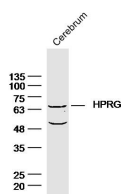
sales@bioss.com.cn

techsupport@bioss.com.cn

400-901-9800

— DATASHEET —

Host: Rabbit Clonality: Polyclonal GeneID: 16177 Target: IL-1R1 Immunogen: KLH conjugated synthetic peptide derived from mouse IL-1R1: 251-350/576. < Extracellular > Purification: affinity purified by Protein A Concentration: 1mg/ml Storage: 0.01M TBS (pH7.4) with 1% BSA, 0.02% Proclin300 and 50% Glycerol. Shipped at 4°C. Store at -20°C for one year. Avoid repeated freeze/thaw cycles. Background: The protein encoded by this gene is a cytokine receptor that belongs to the interleukin 1 receptor family. This protein is a receptor for interleukin alpha (IL1A), interleukin beta (IL1B), and interleukin 1 receptor, type I(IL1R1/IL1RA). It is an important mediator involved in many cytokine induced immune and inflammatory responses. This gene along with interleukin 1 receptor, type II(IL1R2), interleukin 1 receptor-like 2 (IL1RL2), and interleukin 1 receptor-like 1 (IL1RL1) form a cytokine receptor gene cluster in a region mapped to chromosome 2q12. [provided by RefSeq].	Isotype: IgG SWISS: P13504	Applications: WB (1:500-2000) Reactivity: Human, Mouse (predicted: Rat) Predicted MW.: 63 kDa Subcellular Location: Secreted ,Cell membrane
---	---	---

— VALIDATION IMAGES —

Sample: Cerebrum (Mouse) Lysate at 40 ug
Primary: Anti- Acid IL-1R1 (bs-20698R) at 1/300
dilution Secondary: IRDye800CW Goat Anti-
Rabbit IgG at 1/20000 dilution Predicted band
size: 63 kD Observed band size: 65 kD