

**bs-20690R****[ Primary Antibody ]**

**Bioss**  
ANTIBODIES

www.bioss.com.cn

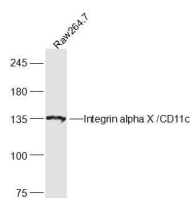
sales@bioss.com.cn

techsupport@bioss.com.cn

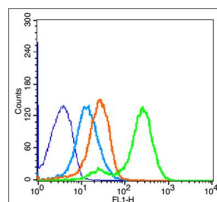
400-901-9800

**CD11c Rabbit pAb****— DATASHEET —**

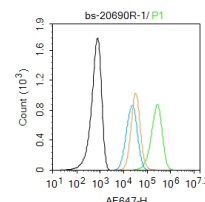
<b>Host:</b> Rabbit	<b>Isotype:</b> IgG	<b>Applications:</b> <b>WB</b> (1:500-2000) <b>Flow-Cyt</b> (1µg/Test)
<b>Clonality:</b> Polyclonal		<b>Reactivity:</b> Human, Mouse (predicted: Rat)
<b>GeneID:</b> 3687	<b>SWISS:</b> P20702	
<b>Target:</b> CD11c		<b>Predicted MW.:</b> 126 kDa
<b>Immunogen:</b> KLH conjugated synthetic peptide derived from human Integrin alpha X /CD11c: 901-1000/1163. < Extracellular >		<b>Subcellular Location:</b> Cell membrane
<b>Purification:</b> affinity purified by Protein A		
<b>Concentration:</b> 1mg/ml		
<b>Storage:</b> 0.01M TBS (pH7.4) with 1% BSA, 0.02% Proclin300 and 50% Glycerol. Shipped at 4°C. Store at -20°C for one year. Avoid repeated freeze/thaw cycles.		
<b>Background:</b> This gene encodes the integrin alpha X chain protein. Integrins are heterodimeric integral membrane proteins composed of an alpha chain and a beta chain. This protein combines with the beta 2 chain (ITGB2) to form a leukocyte-specific integrin referred to as inactivated-C3b (iC3b) receptor 4 (CR4). The alpha X beta 2 complex seems to overlap the properties of the alpha M beta 2 integrin in the adherence of neutrophils and monocytes to stimulated endothelium cells, and in the phagocytosis of complement coated particles. [provided by RefSeq].		

**— VALIDATION IMAGES —**

Sample: Raw264.7 (Mouse) Lysate at 30 µg  
Primary: Anti-Integrin alpha X /CD11c (bs-20690R) at 1/300 dilution Secondary: IRDye800CW Goat Anti-Rabbit IgG at 1/20000 dilution Predicted band size: 126 kD Observed band size: 135 kD



Blank control: Mouse Spleen (fixed with 2% paraformaldehyde for 10 min at 37°C). Primary Antibody: Rabbit Anti-Integrin alpha X /CD11c antibody (bs-20690R, Green); Dilution: 1 µg in 100 µL 1X PBS containing 0.5% BSA; Isotype Control Antibody: Rabbit IgG (orange), used under the same conditions; Secondary Antibody: Goat anti-rabbit IgG-FITC (white blue), Dilution: 1:200 in 1X PBS containing 0.5% BSA.



Blank control: Raw264.7. Primary Antibody (green line): Rabbit Anti-Integrin alpha X /CD11c antibody (bs-20690R) Dilution: 1 µg / 10<sup>6</sup> cells; Isotype Control Antibody (orange line): Rabbit IgG. Secondary Antibody: Goat anti-rabbit IgG-AF647 Dilution: 1 µg / test. Protocol The cells were incubated in 5% BSA to block non-specific protein-protein interactions for 30 min at room temperature. Cells stained with Primary Antibody for 30 min at room temperature. The secondary antibody used for 40 min at room temperature. Acquisition of 20,000 events was performed.

**— SELECTED CITATIONS —**

- **[IF=4.932]** Shuling Zhang. et al. A novel mechanism of lung cancer inhibition by methionine enkephalin through remodeling the immune status of the tumor microenvironment. Int Immunopharmacol. 2021 Oct;99:107999 IF ;Mouse. 34315116
- **[IF=4.7]** Xuelian Zhou. et al. Mannose-Binding Lectin Reduces Oxidized Low-Density Lipoprotein Induced Vascular Endothelial Cells Injury by Inhibiting LOX1-ox-LDL Binding and Modulating Autophagy. BIOMEDICINES. 2023 Jun;11(6):1743

Important Note: This product as supplied is intended for research use only, not for use in human, therapeutic or diagnostic applications.

FCM ;Mouse. 37371838

- **[IF=1.951]** Li Liu, et al. Inhibition of inducible nitric oxide synthase improved erectile dysfunction in rats with type 1 diabetes. 2021 Jun 16 WB ;Rat. 34137064