

IFNW1 Rabbit pAb

Catalog Number: bs-15525R

Target Protein: IFNW1

Concentration: 1mg/ml

Form: Liquid

Host: Rabbit

Clonality: Polyclonal

Isotype: IgG

Applications: WB (1:500-2000)

Reactivity: Human

Predicted MW: 20 kDa

Entrez Gene: 3467

Swiss Prot: P05000

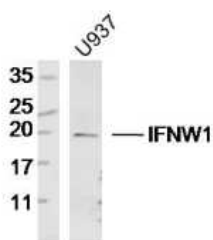
Source: KLH conjugated synthetic peptide derived from human IFNW1: 121-195/195.

Purification: affinity purified by Protein A

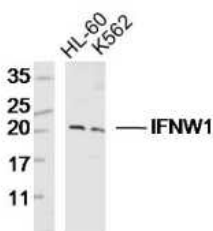
Storage: 0.01M TBS (pH7.4) with 1% BSA, 0.02% Proclin300 and 50% Glycerol.

Shipped at 4°C. Store at -20°C for one year. Avoid repeated freeze/thaw cycles.

VALIDATION IMAGES



Sample: U937 Cell(Human)Lysate at 30 ug Primary: Anti- IFNW1 (bs-15525R)at 1/300 dilution Secondary: IRDye800CW Goat Anti-Rabbit IgG at 1/20000 dilution Predicted band size: 20kD Observed band size: 20kD



Sample: HL-60 Cell (Human) Lysate at 30 ug K562 Cell(Human)Lysate at 30 ug Primary: Anti- IFNW1 (bs-15525R)at 1/300 dilution Secondary: IRDye800CW Goat Anti-Rabbit IgG at 1/20000 dilution Predicted band size: 20kD Observed band size: 20kD