
Gamma Synuclein Rabbit pAb

Catalog Number: bs-0622R

Target Protein: Gamma Synuclein

Concentration: 1mg/ml

Form: Liquid

Host: Rabbit

Clonality: Polyclonal

Isotype: IgG

Applications: IHC-P (1:100-500), IHC-F (1:100-500), IF (1:100-500)

Reactivity: Rat (predicted:Human, Mouse, Dog)

Predicted MW: 13.5 kDa

Entrez Gene: 6623

Swiss Prot: O76070

Source: KLH conjugated synthetic peptide derived from human gamma Synuclein: 2-123/123.

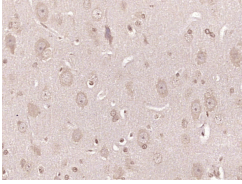
Purification: affinity purified by Protein A

Storage: 0.01M TBS (pH7.4) with 1% BSA, 0.02% Proclin300 and 50% Glycerol.

Shipped at 4°C. Store at -20°C for one year. Avoid repeated freeze/thaw cycles.

Background: The synuclein family consists of 3 highly conserved proteins of between 120 and 140 amino acids that share substantial sequence homology. Each has a series of loosely repeated motifs throughout the first 93 amino acids and an acid region toward the C terminal. The proteins are heat stable and relatively soluble. Three synucleins have been identified and termed alpha, beta and gamma synuclein and are located in the neuronal cytosol and enriched in presynaptic terminals, gamma synuclein is also expressed in many other non-neuronal tissues. Although the precise function of the synucleins are unknown a role in membrane plasticity has been suggested. The synucleins have been implicated in a number of diseases. It has been reported that in breast cancer increased expression of gamma synuclein correlates with disease progression.

VALIDATION IMAGES



Paraformaldehyde-fixed, paraffin embedded (rat brain tissue); Antigen retrieval by boiling in sodium citrate buffer (pH6.0) for 15min; Block endogenous peroxidase by 3% hydrogen peroxide for 20 minutes; Blocking buffer (normal goat serum) at 37°C for 30min; Antibody incubation with (SYUG) Polyclonal Antibody, Unconjugated (bs-0622R) at 1:400 overnight at 4°C, followed by operating according to SP Kit(Rabbit) (sp-0023) instructions and DAB staining.