

bs-15555R**[Primary Antibody]****CENPC1 Rabbit pAb****Bioss**
ANTIBODIES

www.bioss.com.cn

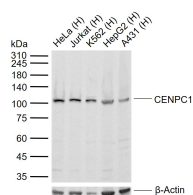
sales@bioss.com.cn

techsupport@bioss.com.cn

400-901-9800

DATASHEET

Host: Rabbit	Isotype: IgG	Applications: WB (1:500-2000)
Clonality: Polyclonal		Reactivity: Human (predicted: Mouse, Rat, Rabbit, Chicken, Dog, Horse)
GeneID: 1060	SWISS: Q03188	
Target: CENPC1		Predicted MW.: 107 kDa
Immunogen: KLH conjugated synthetic peptide derived from human CENPC1: 701-800/943.		Subcellular Location: Nucleus
Purification: affinity purified by Protein A		
Concentration: 1mg/ml		
Storage: 0.01M TBS (pH7.4) with 1% BSA, 0.02% Proclin300 and 50% Glycerol. Shipped at 4°C. Store at -20°C for one year. Avoid repeated freeze/thaw cycles.		
Background: Centromere protein C 1 is a centromere autoantigen and a component of the inner kinetochore plate. The protein is required for maintaining proper kinetochore size and a timely transition to anaphase. A putative pseudogene exists on chromosome 12.		

VALIDATION IMAGES

Sample: Lane 1: Human HeLa cell lysates Lane 2: Human Jurkat cell lysates Lane 3: Human K562 cell lysates Lane 4: Human HepG2 cell lysates Lane 5: Human A431 cell lysates Primary: Anti-CENPC1 (bs-15555R) at 1/1000 dilution Secondary: IRDye800CW Goat Anti-Rabbit IgG at 1/20000 dilution Predicted band size: 107 kDa Observed band size: 105 kDa