

[Primary Antibody]



BioSS
ANTIBODIES

www.bioss.com.cn

sales@bioass.com.cn

techsupport@bioss.com.cn

400-901-9800

CD8 Rabbit pAb

— DATASHEET

Host: Rabbit

Isotype: IgG

Clonality: Polyclonal

GeneID: 12525

SWISS: P01731

Target: CD8

Immunogen: KLH conjugated synthetic peptide derived from mouse CD8: 51-150/247.

Purification: affinity purified by Protein A

Concentration: 1mg/ml

Storage: 0.01M TBS (pH7.4) with 1% BSA, 0.02% Proclin300 and 50% Glycerol.

Shipped at 4°C. Store at -20°C for one year. Avoid repeated freeze/thaw cycles.

Background: The CD8 antigen is a cell surface glycoprotein found on most cytotoxic T lymphocytes that mediates efficient cell-cell interactions within the immune system. The CD8 antigen acts as a coreceptor with the T-cell receptor on the T lymphocyte to recognize antigens displayed by an antigen presenting cell in the context of class I MHC molecules. The coreceptor functions as either a homodimer composed of two alpha chains or as a heterodimer composed of one alpha and one beta chain. Both alpha and beta chains share significant homology to immunoglobulin variable light chains. This gene encodes the CD8 alpha chain. Multiple transcript variants encoding different isoforms have been found for this gene. The major protein isoforms of this gene differ by the presence or absence of a transmembrane domain and thus differ in being a membrane-anchored or secreted protein. [provided by RefSeq, May 2020]

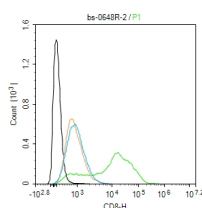
Applications: Flow-Cyt (2ug/Test)

Reactivity: Human (predicted: Mouse)

Predicted
MW.: 27 kDa

Subcellular Location: Cell membrane

— VALIDATION IMAGES



Blank control: Molt-4. Primary Antibody (green line): Rabbit Anti-CD8 antibody (bs-0648R)
Dilution: 2ug/Test; Secondary Antibody (white blue line) : Goat anti-rabbit IgG-FITC Dilution: 0.5ug/Test. Isotype control (orange line) : Normal Rabbit IgG Protocol The cells were incubated in 5%BSA to block non-specific protein-protein interactions for 30 min at room temperature. Cells stained with Primary Antibody for 30 min at room temperature. The secondary antibody used for 40 min at room temperature. Acquisition of 20,000 events was performed.

— SELECTED CITATIONS

- **[IF=29.497]** Di Zhao. et al. Chromatin Regulator CHD1 Remodels the Immunosuppressive Tumor Microenvironment in

Important Note: This product as supplied is intended for research use only, not for use in human, therapeutic or diagnostic applications.

PTEN-Deficient Prostate Cancer. Cancer Discov. 2020 Sep;10(9):1374-1387 IF,IHC ;Human. 32385075

- **[IF=29]** Ji Liu. et al. QDPR deficiency drives immune suppression in pancreatic cancer. CELL METAB. 2024 Apr 19 IHC,IF ;Mouse,Human. 38642552
- **[IF=27.7]** Yang Liu. et al.Generation of tolerogenic antigen-presenting cells in vivo via the delivery of mRNA encoding PDL1 within lipid nanoparticles..Nature Biomedical Engineering.2025 Mar 28. IHC ;Mouse. 40155762
- **[IF=16.907]** Senbiao Chenaet al. Carrier-free nanoassembly of doxorubicin prodrug and siRNA for combinationally inducing immunogenic cell death and reversing immunosuppression. Nano Today 35 (2020) 100924 IHC ;mouse. 10.1016/j.nantod.2020.100924
- **[IF=15.5]** Chen Hao. et al. Arula-7 powder improves diarrhea and intestinal epithelial tight junction function associated with its regulation of intestinal flora in calves infected with pathogenic Escherichia coli O1. MICROBIOME. 2023 Dec;11(1):1-14 IF ;Bovine. 37542271