

bs-0999R**[Primary Antibody]****GM-CSF Rabbit pAb****Bioss**
ANTIBODIES

www.bioss.com.cn

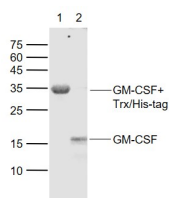
sales@bioss.com.cn

techsupport@bioss.com.cn

400-901-9800

— DATASHEET —

Host: Rabbit	Isotype: IgG	Applications: WB (1:500-2000)
Clonality: Polyclonal		Reactivity: Pig (predicted: Mouse, Rat, Recombinant protein)
GeneID: 12981	SWISS: P01587	
Target: GM-CSF		Predicted MW.: 14 kDa
Immunogen: KLH conjugated synthetic peptide derived from mouse GM-CSF: 71-141/141.		Subcellular Location: Secreted
Purification: affinity purified by Protein A		
Concentration: 1mg/ml		
Storage: 0.01M TBS (pH7.4) with 1% BSA, 0.02% Proclin300 and 50% Glycerol. Shipped at 4°C. Store at -20°C for one year. Avoid repeated freeze/thaw cycles.		
Background: The protein encoded by this gene is a cytokine that controls the production, differentiation, and function of granulocytes and macrophages. The active form of the protein is found extracellularly as a homodimer. This gene has been localized to a cluster of related genes at chromosome region 5q31, which is known to be associated with interstitial deletions in the 5q-syndrome and acute myelogenous leukemia. Other genes in the cluster include those encoding interleukins 4, 5, and 13. [provided by RefSeq, Jul 2008].		

— VALIDATION IMAGES —

Sample: Lane 1: Recombined Trx/His-tag porcine GM-CSF protein (Aa18-144) at 5 ug
Lane 2: Recombined His-tag porcine GM-CSF protein
Primary: Anti-GM-CSF (bs-0999R) at 1/1000 dilution
Secondary: IRDye800CW Goat Anti-Rabbit IgG at 1/20000 dilution
Predicted band size: 33/15 kD
Observed band size: 33/15 kD