

bsm-43169M

[Primary Antibody]

Cat TSH Alpha/Beta Heterodimer Mouse mAb

Bioss
ANTIBODIES

www.bioss.com.cn

sales@bioss.com.cn

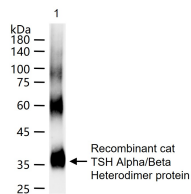
techsupport@bioss.com.cn

400-901-9800

— DATASHEET —

Host: Mouse	Isotype: IgG	Applications: WB (1:500-2000) Reactivity: Cat Predicted MW.: 14 kDa Subcellular Location: Secreted
Clonality: Monoclonal	CloneNo.: 8G1	
Target: Cat TSH Alpha/Beta Heterodimer		
Purification: affinity purified by Protein A		
Concentration: 1mg/ml		
Storage: 0.01M TBS (pH7.4) with 1% BSA, 0.02% Proclin300 and 50% Glycerol. Shipped at 4°C. Store at -20°C for one year. Avoid repeated freeze/thaw cycles.		
Background: The four human glycoprotein hormones chorionic gonadotropin (CG), luteinizing hormone (LH), follicle stimulating hormone (FSH), and thyroid stimulating hormone (TSH) are dimers consisting of alpha and beta subunits that are associated noncovalently. The alpha subunits of these hormones are identical, however, their beta chains are unique and confer biological specificity. The protein encoded by this gene is the alpha subunit and belongs to the glycoprotein hormones alpha chain family. Two transcript variants encoding different isoforms have been found for this gene. [provided by RefSeq, Nov 2011]		

— VALIDATION IMAGES —



100 ng Recombinant cat TSH Alpha/Beta Heterodimer protein, C-His (HEK293) (bs-43169P) per lane probed with Cat TSH Alpha/Beta Heterodimer Mouse mAb monoclonal antibody respectively, unconjugated (bsm-43169M) at 1:1000 dilution and 4°C overnight incubation. Followed by corresponding conjugated secondary antibody incubation at r.t. for 60 min.