

bs-17637R**[Primary Antibody]****SPATS1 Rabbit pAb****Bioss**
ANTIBODIES

www.bioss.com.cn

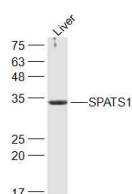
sales@bioss.com.cn

techsupport@bioss.com.cn

400-901-9800

— DATASHEET —**Host:** Rabbit**Isotype:** IgG**Clonality:** Polyclonal**GeneID:** 221409**SWISS:** Q496A3**Target:** SPATS1**Immunogen:** KLH conjugated synthetic peptide derived from human SPATS1: 151-250/300.**Purification:** affinity purified by Protein A**Concentration:** 1mg/ml**Storage:** 0.01M TBS (pH7.4) with 1% BSA, 0.02% Proclin300 and 50% Glycerol.

Shipped at 4°C. Store at -20°C for one year. Avoid repeated freeze/thaw cycles.

Background: SRSP1 is a 300 amino acid protein that exists as two alternatively spliced isoforms and may play a role in spermatogenesis. The gene encoding SRSP1 maps to human chromosome 6, which contains 170 million base pairs and comprises nearly 6% of the human genome. Deletion of a portion of the q arm of chromosome 6 is associated with early onset intestinal cancer, suggesting the presence of a cancer susceptibility locus. Additionally, Porphyria cutanea tarda, Parkinson's disease, Stickler syndrome and a susceptibility to bipolar disorder are all associated with genes that map to chromosome 6.**Applications:** WB (1:500-2000)**Reactivity:** Mouse
(predicted: Human,
Rat, Dog, Horse)**Predicted
MW.:** 34 kDa**— VALIDATION IMAGES —**

Sample: Liver (Mouse) Lysate at 40 ug Primary:

Anti-SPATS1 (bs-17637R) at 1/300 dilution

Secondary: IRDye800CW Goat Anti-Rabbit IgG at

1/20000 dilution Predicted band size: 34 kD

Observed band size: 34kD