

bs-17672R

[Primary Antibody]

SPATA22 Rabbit pAb

BioSS
ANTIBODIES

www.bioss.com.cn

sales@bioss.com.cn

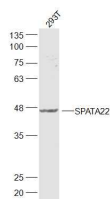
techsupport@bioss.com.cn

400-901-9800

— DATASHEET —

Host: Rabbit	Isotype: IgG	Applications: WB (1:500-2000)
Clonality: Polyclonal		
GeneID: 84690	SWISS: Q8NHS9	
Target: SPATA22		
Immunogen: KLH conjugated synthetic peptide derived from human SPATA22: 1-100/363.		
Purification: affinity purified by Protein A		Reactivity: Human (predicted: Mouse, Rabbit, Pig, Cow, Horse)
Concentration: 1mg/ml		Predicted MW.: 41 kDa
Storage: 0.01M TBS (pH7.4) with 1% BSA, 0.02% Proclin300 and 50% Glycerol. Shipped at 4°C. Store at -20°C for one year. Avoid repeated freeze/thaw cycles.		Subcellular Location: Cytoplasm

— VALIDATION IMAGES —



Sample: 293T(Human) Cell Lysate at 30 ug
Primary: Anti-SPATA22 (bs-17672R) at 1/300
dilution Secondary: IRDye800CW Goat Anti-
Rabbit IgG at 1/20000 dilution Predicted band
size: 41 kD Observed band size: 41 kD